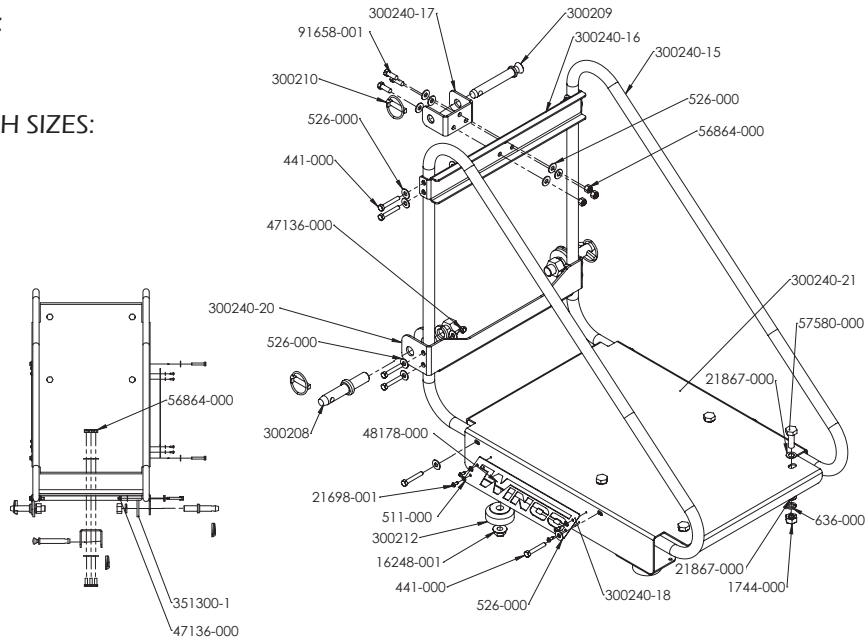


**REQUIRED TOOLS:**

TAPE MEASURE

**SOCKET & WRENCH SIZES:**

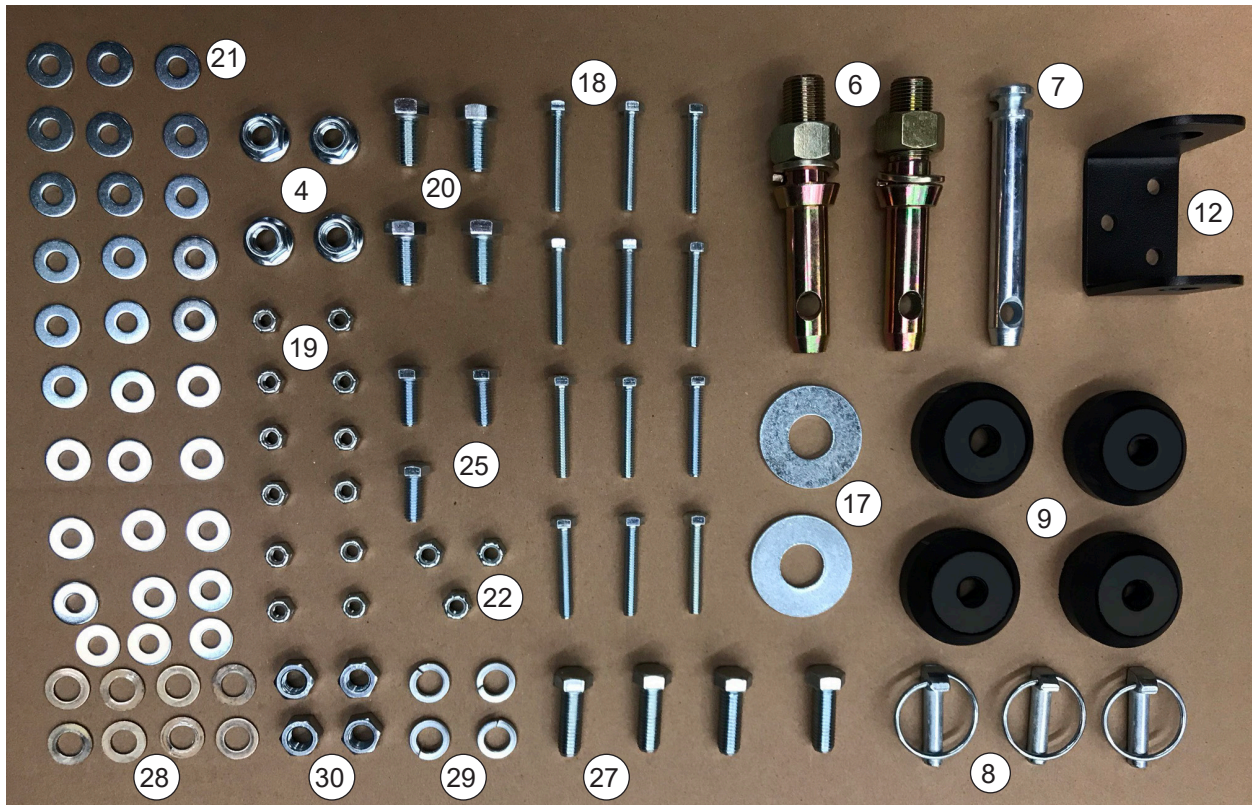
- 9/16 IN
- 3/4 IN
- 1 3/16 IN



Item No.	Part Number	Description	Qty
4	16248-001	.5-13 Flange Nut	4*
5	21698-001	Torx Pan Head Screw #10	6
6	300208	Pin, Draw	2*
7	300209	Pin, Top Link	1*
8	300210	Lynch Pin	3*
9	300212	Isolator, Neoprene, 40 Duro	4*
10	300240-15	TPH250 Main Frame	2
11	300240-16	Top Cross Member	1
12	300240-17	Top Link Bracket	1*
13	300240-18	WINCO Panel	2
15	300240-20	Draw Pin Bracket	1
16	300240-21	Base Plate	1
17	351300-1	.875 Washer	2*
18	441-000	5/16-18 x 2 HHCS	12*
19	47136-000	Hex Nut .3125-18 Nylock	12*
20	48178-000	HHCS 1/2-13 x 1	4*
21	526-000	5/16 Flat Washer	30*
22	56864-000	Elastic Stop Nut .375-16	3*
23	511-000	#8 Flat Washer	6
25	91658-001	HHCS 3/8-16 x 1	3*

\* Located in Parts Bag

# PARTS BAG

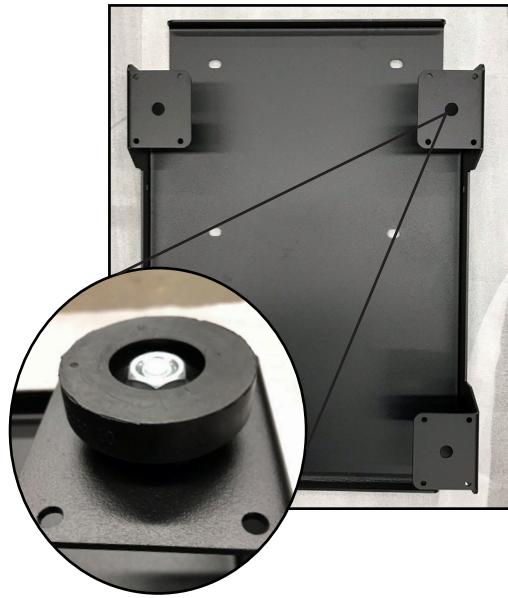


Item No.	Part Number	Description	Qty
4	16248-001	.5-13 Flange Nut	4
6	300208	Pin, Draw	2
7	300209	Pin, Top Link	1
8	300210	Lynch Pin	3
9	300212	Isolator, Neoprene, 40 Duro	4
12	300240-17	Top Link Bracket	1
17	351300-1	.875 Washer	2
18	441-000	5/16-18 x 2 HHCS	12
19	47136-000	Hex Nut .3125-18 Nylock	12
20	48178-000	HHCS 1/2-13 x 1	4
21	526-000	5/16 Flat Washer	30
22	56864-000	Elastic Stop Nut .375-16	3
25	91658-001	HHCS 3/8-16 x 1	3
27	57580-000	HHCS 1/2-13X1-1/2 GR5	4*
28	21867-000	Flat Washer 1/2 .515 x .88 x .05	8*
29	636-000	Lockwasher 1/2 Split	4*
30	1744-000	Nut Hex 1/2-13	4*

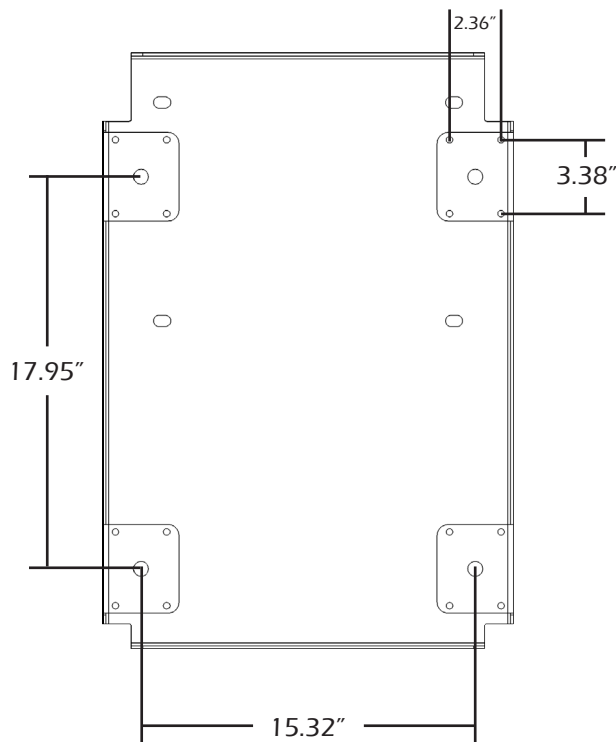
\* For installing generator

# STEP 1

- With the base plate (16) bottom side up, secure the isolators (9) to the four feet of the base plate using 48178-000 (20) and 16248-001 (4). The nut will install at the bottom of the isolator.
- Flip the base over.



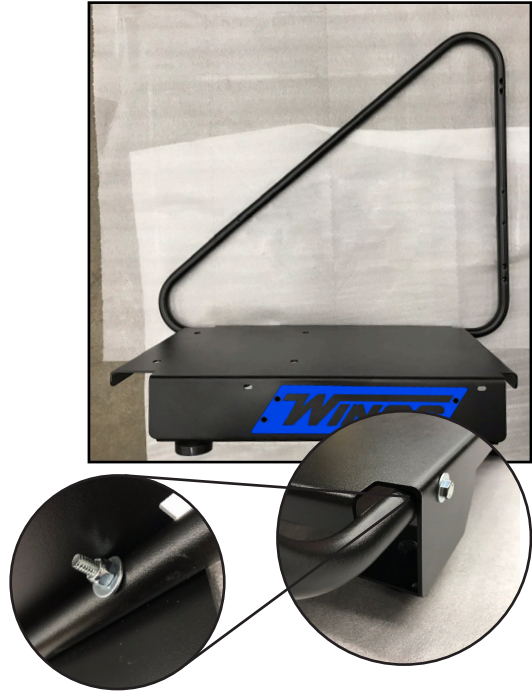
Note: You may also install casters in lieu of the isolators. The hole size is 11/16" diam.



## STEP 2

- Install the left and right side panels (13)(14). The panel cradle will sit under the base. Use 441-000 (18) and 526-000 (21) from the outside and secure with a 526-000 (21) and 47136-000 (19) on the inside. See pictures.

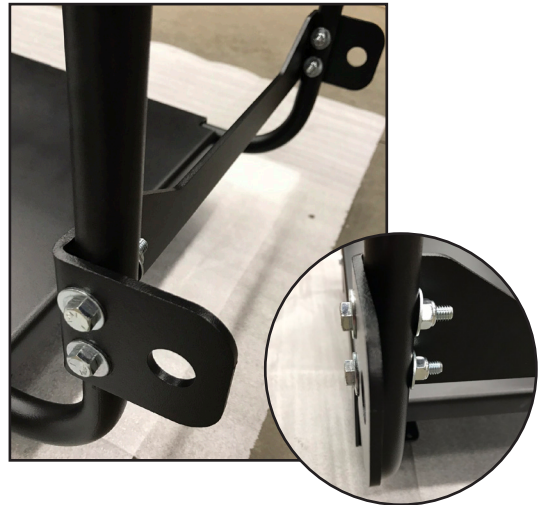
NOTE: The four holes are the front of the TPH250.



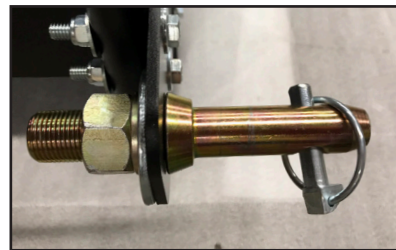
## STEP 3

- The draw pin bracket (15) installs on the bottom of the side panels, behind the panel cradle. Use 441-000 (18) and 526-000 (21) on the outside and secure with 526-000 (21) and 47136-000 (19).

NOTE: The flat part of the bracket is the bottom.



- The draw pin (6) comes with the washer and nut attached. Remove the nut and washer and install into the bracket holes of the draw pin bracket (15).
- Insert a lynch pin (8) to the draw pin.





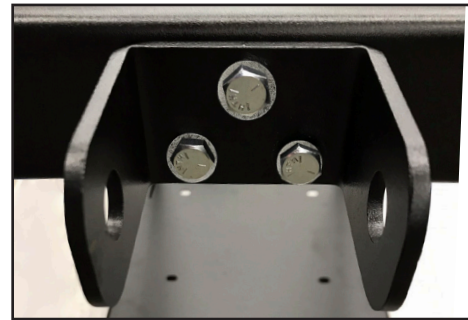
## STEP 4

- The top cross member (11) installs on the top of the side panels, behind the panel cradle. Use 441-000 (18) and 526-000 (21) on the outside and secure with 526-000 (21) and 47136-000 (19).

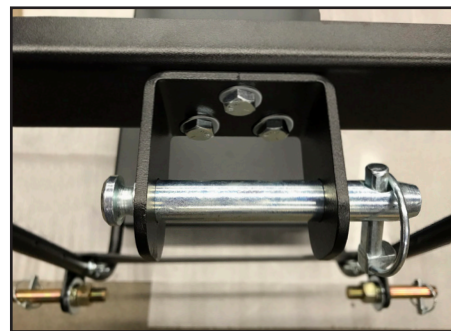


NOTE: The three holes of the top cross member should be two on bottom and one on top when installing.

- Install the top link bracket (12) to the top cross member (11) using 91658-001 (25), 526-000 (21), and 56854-000 (22).



- Install the top link pin (7) through the bracket. Secure with a lynch pin (8).



# COMPLETED TPH250

