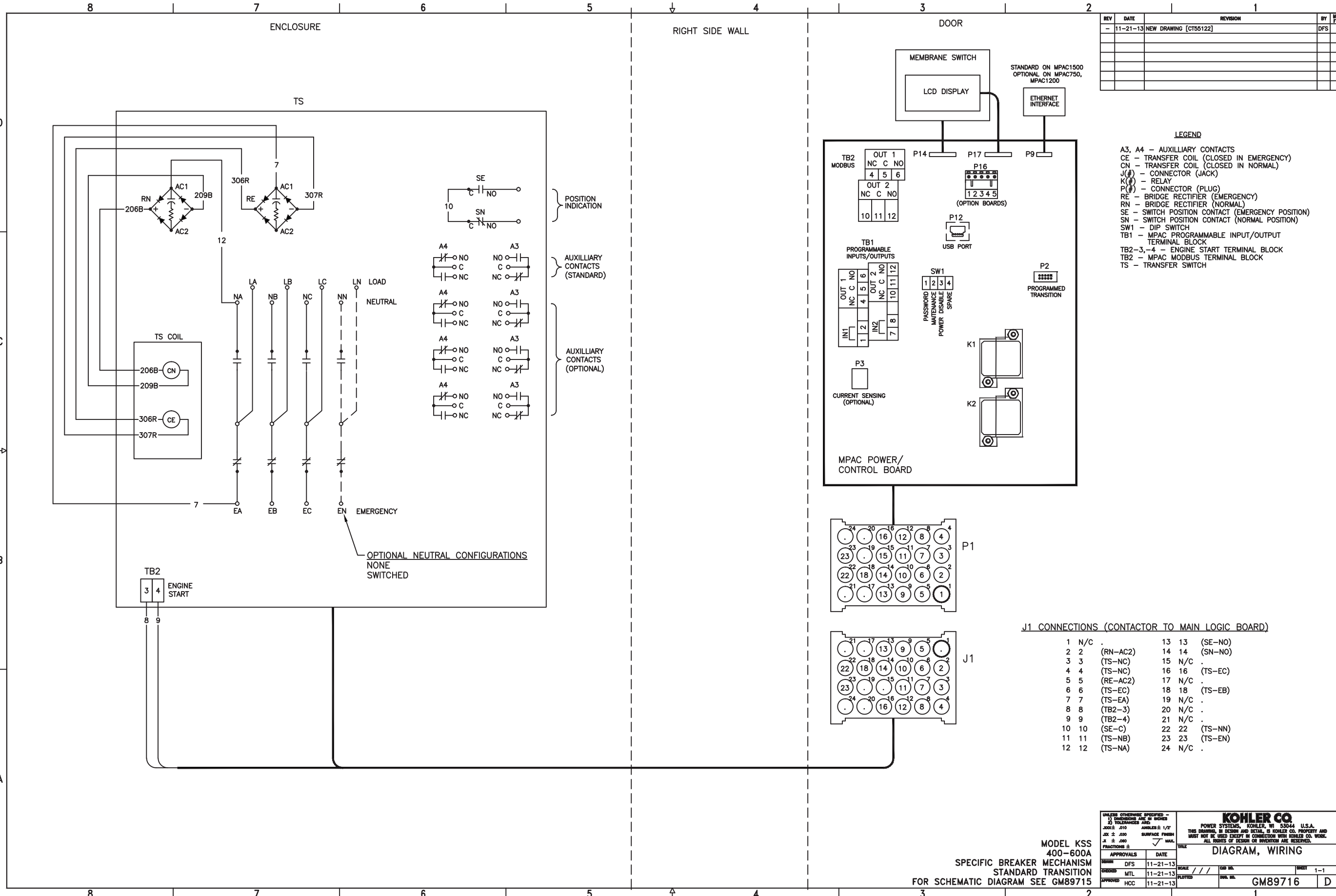


REV	DATE	REVISION	BY	APP
-	11-21-13	NEW DRAWING [CT55122]	DFS	

- LEGEND**
- A3, A4 - AUXILIARY CONTACTS
 - CE - TRANSFER COIL (CLOSED IN EMERGENCY)
 - CN - TRANSFER COIL (CLOSED IN NORMAL)
 - J(#)- CONNECTOR (JACK)
 - K(#)- RELAY
 - P(#)- CONNECTOR (PLUG)
 - RE - BRIDGE RECTIFIER (EMERGENCY)
 - RN - BRIDGE RECTIFIER (NORMAL)
 - SE - SWITCH POSITION CONTACT (EMERGENCY POSITION)
 - SN - SWITCH POSITION CONTACT (NORMAL POSITION)
 - SW1 - DIP SWITCH
 - TB1 - MPAC PROGRAMMABLE INPUT/OUTPUT TERMINAL BLOCK
 - TB2-3,-4 - ENGINE START TERMINAL BLOCK
 - TB2 - MPAC MODBUS TERMINAL BLOCK
 - TS - TRANSFER SWITCH



J1 CONNECTIONS (CONTACTOR TO MAIN LOGIC BOARD)

1	N/C	13	13	(SE-NO)	
2	2	(RN-AC2)	14	14	(SN-NO)
3	3	(TS-NC)	15	N/C	.
4	4	(TS-NC)	16	16	(TS-EC)
5	5	(RE-AC2)	17	N/C	.
6	6	(TS-EC)	18	18	(TS-EB)
7	7	(TS-EA)	19	N/C	.
8	8	(TB2-3)	20	N/C	.
9	9	(TB2-4)	21	N/C	.
10	10	(SE-C)	22	22	(TS-NN)
11	11	(TS-NB)	23	23	(TS-EN)
12	12	(TS-NA)	24	N/C	.

MODEL KSS
400-600A
SPECIFIC BREAKER MECHANISM
STANDARD TRANSITION
FOR SCHEMATIC DIAGRAM SEE GM89715

UNLESS OTHERWISE SPECIFIED -
1) DIMENSIONS ARE IN INCHES
2) TOLERANCES ARE:
FRACTIONS ± .005
DECIMALS ± .010
ANGLES ± 1/2°
SURFACE FINISH
AS SHOWN
DRAWN: DFS
CHECKED: MTL
APPROVED: HCC

KOHLER CO.
POWER SYSTEMS, KOHLER, WI 53044 U.S.A.
THIS DRAWING, IN DESIGN AND DETAIL, IS KOHLER CO. PROPERTY AND
MUST NOT BE USED EXCEPT IN CONNECTION WITH KOHLER CO. WORK.
ALL RIGHTS OF DESIGN OR INVENTION ARE RESERVED.

DIAGRAM, WIRING

APPROVALS: DFS 11-21-13
DATE: 11-21-13
SCALE: / / /
SHEET: 1-1
DWG. NO.: GM89716