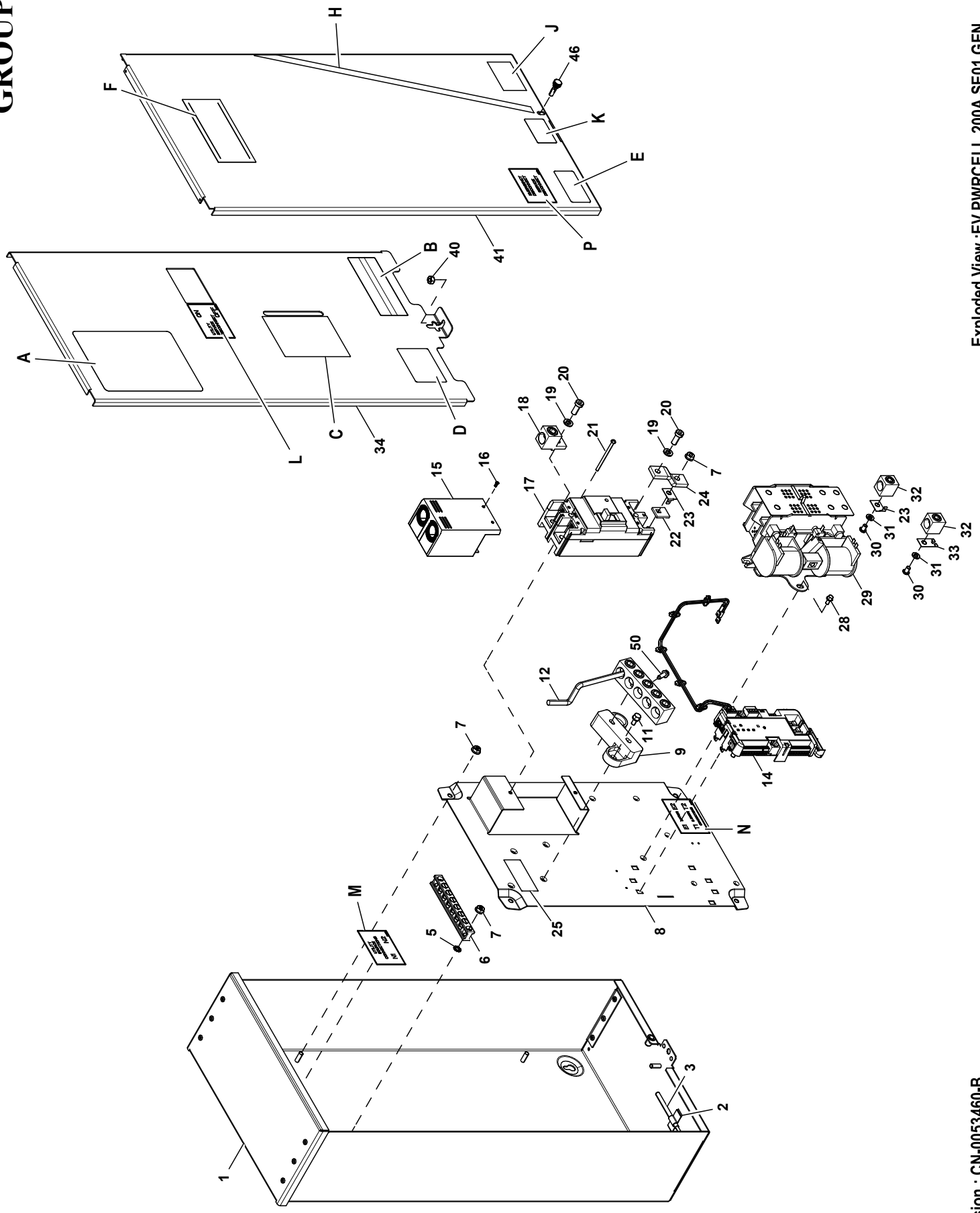


GROUP



EXPLODEDVIEW: EV PWRCELL 200A SE01 GEN

DRAWING#: A0001501150

GROUP

APPLICABLE TO:

| ITEM | PART# | QTY. | DESCRIPTION |
|------|-------------|------|---|
| 1 | 10000000818 | 1 | AL14 ENCLOSURE 200A SE XFRSW |
| 2 | OK8254 | 1 | U-CLIP ADHESIVE |
| 3 | 0E6155 | 1 | PIN ARM EXTENDER |
| 5 | G026850 | 2 | WASHER LOCK EXT 1/4 STL |
| 6 | 0J8202 | 1 | LUG SLDLSS 2/0-#14 AL9CU |
| 7 | 0G8411 | 8 | NUT HEX FLANGE WHIZ 1/4-20 |
| 8 | 10000000825 | 1 | SUBPLATE,200A SE XFER SW |
| 9 | --- | 1 | ASSY NEUT BLK 200-400A W/TAP |
| 10 | 028739A | 1 | TIE WRAP UL 3.9" X .10" BLK (NOT SHOWN) |
| 11 | G090388 | 2 | SCREW HHTT M6-1.0 X 12 ZINC |
| 12 | OK1081 | 1 | WIRE NEUTRAL/GND CONNECTION |
| 13 | 10000005872 | 1 | HARNESS 100/200A TS (NOT SHOWN) |
| 14 | A0002059820 | 1 | ASSY MODULE- PWRCELL ATS CONTROLLER V3 |
| 15 | OK8414 | 1 | CB TERMINAL COVER 2 POLE 240V FNGR SAFE |
| 16 | OK8628 | 2 | SCREW PFHM 4-24 X 5/16 TCS |
| 17 | OK0133 | 1 | CB 200A 2POLE 240V 225AF |
| 18 | 0H6306 | 2 | LUG SLDLSS 350 MCM-6 AL/CU |
| 19 | G022129 | 4 | WASHER LOCK SPRING 5/16 ZC |
| 20 | G049897 | 4 | SCREW SHC LOW M8-1.25 X 20 G8 |
| 21 | OK0973 | 2 | SCREW RHM #8-32 X 2-1/2 |
| 22 | OG4413 | 2 | SPACER 200 AMP TRANSFER SWITCH |
| 23 | 0E6033 | 4 | 90 DEGREE DN SPADE CONNECTOR |
| 24 | OK0130 | 2 | BUSBAR 200A TRANSFER SW N1,N2 |
| 25 | OK1018 | 1 | DECAL, NEUTRAL CONNECTION |
| 28 | G074908 | 4 | SCREW HHTT M5-0.8 X 10 BP |
| 29 | 0L2911 | 1 | XFRSW HSB 200A 2P 250V |
| 30 | 0F1252 | 4 | SCREW BHSC 1/4-20 X 3/8 |
| 31 | G022097 | 4 | WASHER LOCK SPRING 1/4 ZC |
| 32 | 0E3375 | 4 | LUG SLDLSS 250-#6 AL/CU |
| 33 | 0E6034 | 1 | STRAIGHT SPADE CONNECTOR |
| 34 | A0001835438 | 1 | COVER SERVICE INSIDE 200A SE XFER SW |
| A | --- | 1 | DECAL TEST SEQUENCE 100-200A SE |
| B | --- | 1 | DECAL TERMINAL SHOCK HZD BI |
| C | --- | 1 | DECAL WARN MANUAL OPER HANDLE EN/SP/FR |
| D | --- | 1 | DECAL LIVE CIRCUIT ENG/FRN/SPN |
| 40 | G085889 | 1 | NUT HEX 1/4-20 SS |
| 41 | A0001835426 | 1 | COVER SERVICE 200A SE XFER SW |
| E | --- | 1 | DECAL NEC COMPLIANCE |
| F | --- | 1 | DECAL GENERAC PWRCELL 124X57 MM |
| H | --- | 1 | DECAL GENERAC PWRCELL STRIPE 495X13 MM |
| J | --- | 1 | DECAL WCR NEC COMPLIANCE |
| K | --- | 1 | DECAL PROP 65 EN/SP/FR |
| 46 | 0L6700 | 1 | SCREW THUMB 1/4-20 X 1/2 KNURL |
| 49 | G057593 | 1 | CABLE TIE MOUNT BLACK (NOT SHOWN) |
| 50 | G026902 | 1 | SCREW HHTT #8-32 X 1/4 CZ |
| 51 | A0000840196 | 1 | PWRCELL DECALS SERVICE ENTRANCE (NOT SHOWN) |
| L | --- | 1 | PWRCELL DECALS SERVICE ENTRANCE (INCLUDED IN A0000840196) |
| M | --- | 1 | PWRCELL DECALS SERVICE ENTRANCE (INCLUDED IN A0000840196) |
| N | --- | 1 | PWRCELL DECALS SERVICE ENTRANCE (INCLUDED IN A0000840196) |
| P | --- | 1 | PWRCELL DECALS SERVICE ENTRANCE (INCLUDED IN A0000840196) |