

SPECIFICATIONS

ELECTRICAL INLET / OUTLET

- 120V / 15A (Nema 5-15R) Power Inlet
- 120V / 20A (Nema 5-20P) Power Inlet
- 120V / 15A (Nema 5-20R) GFCI Duplex Outlet

ELECTRICAL CONTROLS

- 15A / 20A power distribution switch
- 15A / 20A Main Breaker
- 5A Individual Light Switches

FLOODLIGHTS

- Four [4] 290W LED fixtures
 - Efficiency: 130 lumens per watt
 - 38,000 lumens each
 - 152,000 total lumens
- Coverage: 26,930 ft² (2,502 m²) @ min. 0.5 ft-c
- IP65 LED Modules with 50,000 hour life expectancy
- Individually adjustable light fixtures
- Aluminum / Poly construction housing
- Cabinet mounted LED drivers
- 30VDC mast cord and fixture
- Friction disc mounting for tool less positioning

MAST

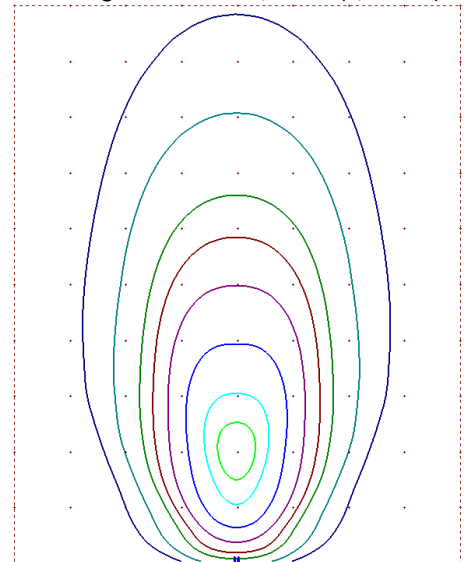
- Vertical mast; 32.8 ft. (10 m) 5 section with ground-adjustable fixtures
- Single handle manual winch for ease of deployment
- Mast rotation: 340°
- Galvanized mast sections
- Self-retracting coiled mast cord
- Equipped with single lifting eye

CHASSIS

- 49.5 mph (80 kph) wind rating
- Steel frame with galvanized fork pockets
- Four side forkable
- (4) 1200 lb. (544 kg) leveling jacks
- Galvanized-extendable side outriggers lock in position for storage
- Steel painted lockable doors
- Individual floodlight On/Off switches



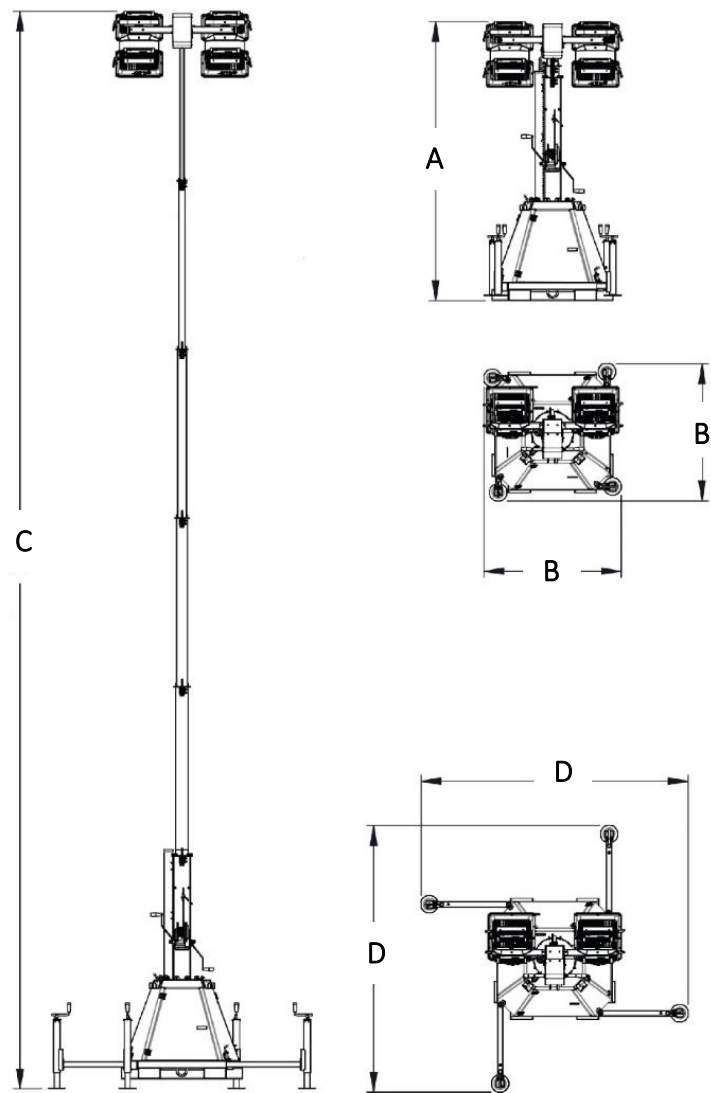
Lights forward @ 70-degree tilt
Coverage @ 0.5 ft-c: 26,930 ft² (2,502 m²)



Scale = 200 ft x 250 ft (61 m x 76 m)
Analysis completed with visual software at Generac.

WEIGHT & DIMENSIONS

- Operating weight: 881.8 lb (400 kg)



A	B	C	D
8.33 ft (2.54 m)	4.09 ft (1.247 m)	32.48 ft (10 m)	8.3 ft (2.53 m)

WARRANTY

- ◆ 2 Years / 2000 Hours

FOR MORE INFORMATION

- Owner’s manual is available at www.generacmobileproducts.com/resources-tools/manuals.