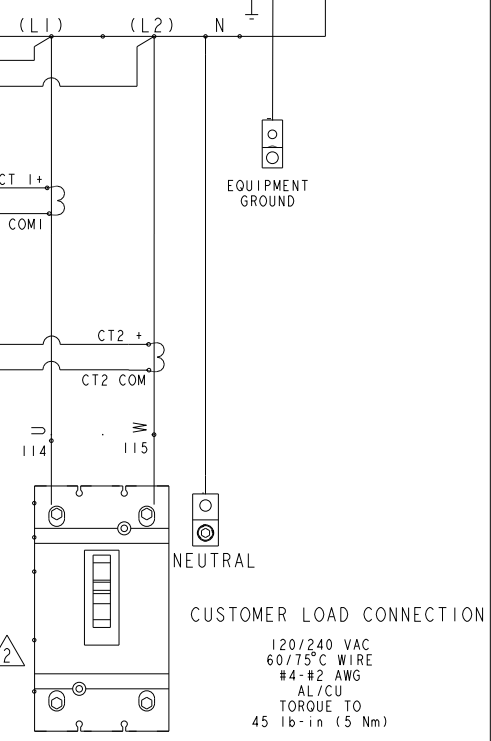
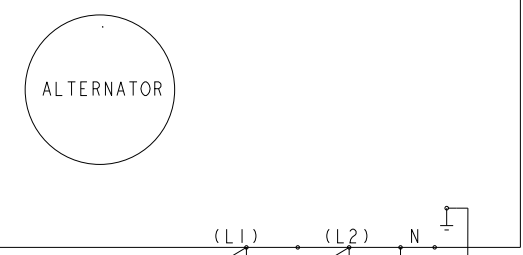
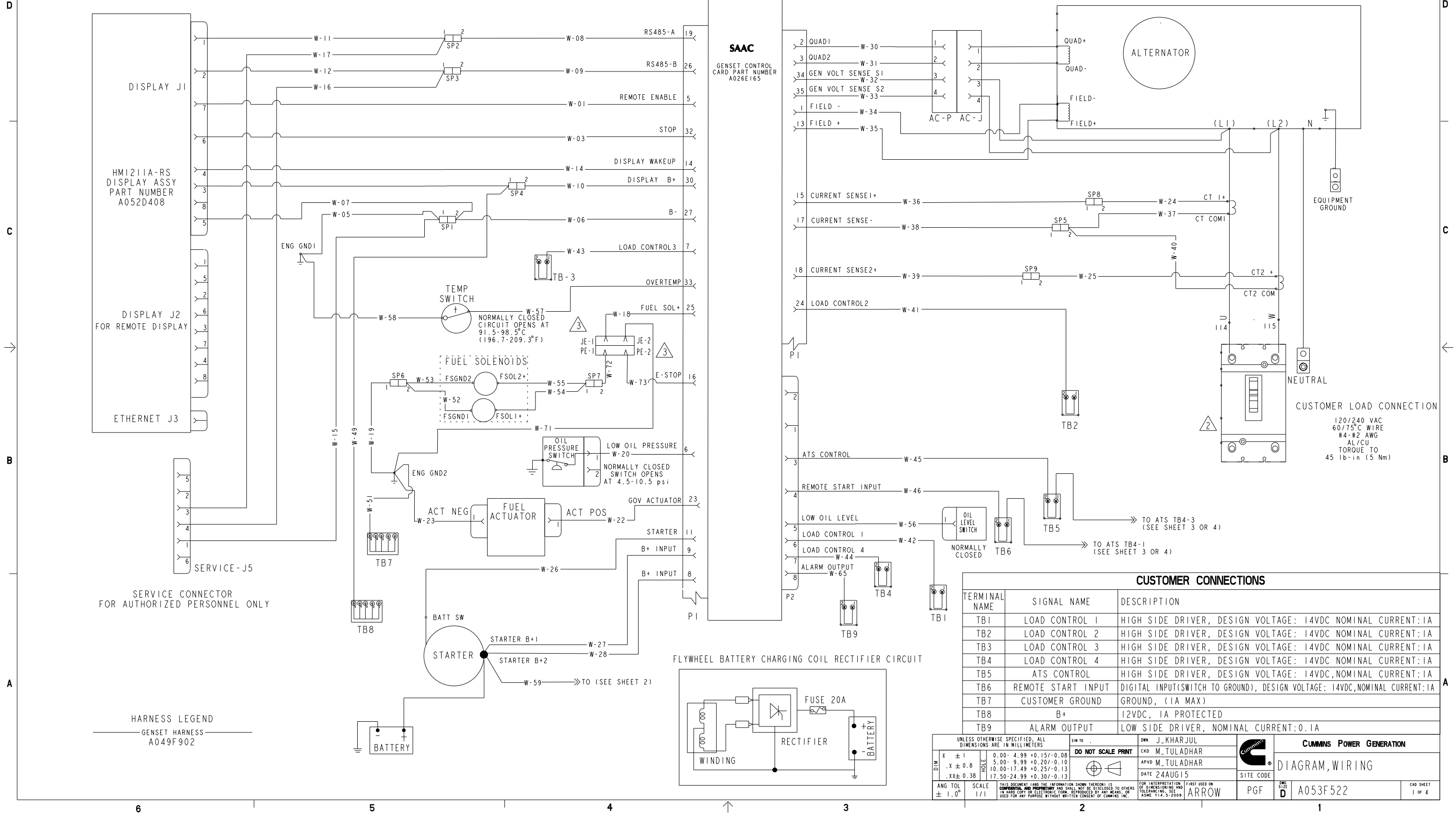
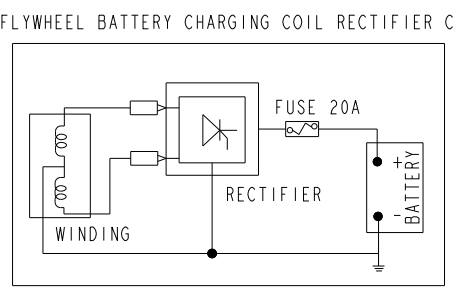


REL NO	REV	NO	REVISION	DRN	CKD	APVD	DATE
ECO-166256	E	1	ADD NOTE 3	PT	MT	M_TULADHAR	28NOV16
		2	ZONE (A4), ADD BATTERY DIAGRAM TO STARTER	PT	MT	M_TULADHAR	28NOV16
		3	ZONE (B6) ADD 'ETHERNET J3' TO DISPLAY	PT	MT	M_TULADHAR	28NOV16
		4	SEE SHEET 2	PT	MT	M_TULADHAR	28NOV16

- NOTES:
- ALL DEVICES ARE SHOWN DE-ENERGIZED WITH TRANSFER SWITCH CLOSED TO UTILITY.
 - SINGLE PHASE TRUE TWO POSITION MECHANISM. MAXIMUM VOLTAGE UPTO 240 VAC.
 - SEE SHEET 2 FOR EMERGENCY STOP KIT CONNECTION (ZONE A1).



TERMINAL NAME	SIGNAL NAME	DESCRIPTION
TB1	LOAD CONTROL 1	HIGH SIDE DRIVER, DESIGN VOLTAGE: 14VDC NOMINAL CURRENT: 1A
TB2	LOAD CONTROL 2	HIGH SIDE DRIVER, DESIGN VOLTAGE: 14VDC NOMINAL CURRENT: 1A
TB3	LOAD CONTROL 3	HIGH SIDE DRIVER, DESIGN VOLTAGE: 14VDC NOMINAL CURRENT: 1A
TB4	LOAD CONTROL 4	HIGH SIDE DRIVER, DESIGN VOLTAGE: 14VDC NOMINAL CURRENT: 1A
TB5	ATS CONTROL	HIGH SIDE DRIVER, DESIGN VOLTAGE: 14VDC, NOMINAL CURRENT: 1A
TB6	REMOTE START INPUT	DIGITAL INPUT(SWITCH TO GROUND), DESIGN VOLTAGE: 14VDC, NOMINAL CURRENT: 1A
TB7	CUSTOMER GROUND	GROUND, (1A MAX)
TB8	B+	12VDC, 1A PROTECTED
TB9	ALARM OUTPUT	LOW SIDE DRIVER, NOMINAL CURRENT: 0.1A

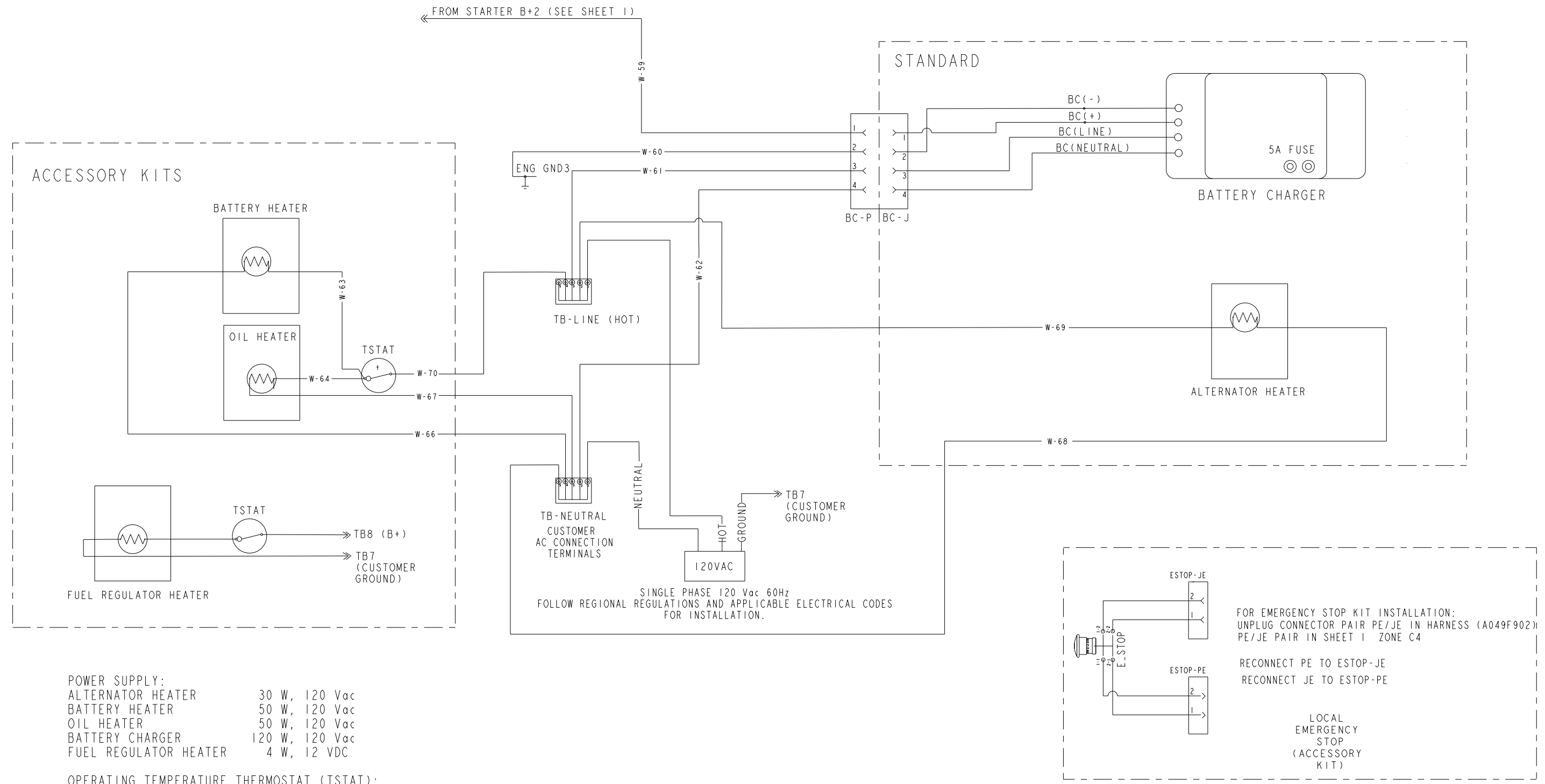


SERVICE CONNECTOR FOR AUTHORIZED PERSONNEL ONLY

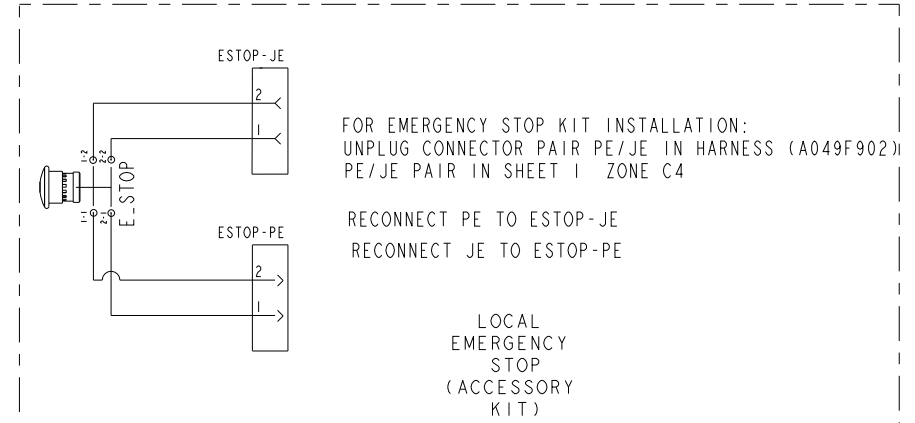
HARNESS LEGEND
GENSET HARNESS
A049F902

UNLESS OTHERWISE SPECIFIED, ALL DIMENSIONS ARE IN MILLIMETERS		SW TO	DWN J_KHARJUL	CUMMINS POWER GENERATION
DO NOT SCALE PRINT		CKD M_TULADHAR	APVD M_TULADHAR	
DIM	TOLERANCE	DATE 24AUG15	SITE CODE	DIAGRAM, WIRING
ANG TOL	SCALE	DATE 24AUG15	PGF	
± 1.0°	1/1	DATE 24AUG15	ARROW	A053F522
<small>THIS DOCUMENT (AND THE INFORMATION SHOWN THEREON) IS CONFIDENTIAL AND PROPRIETARY AND SHALL NOT BE DISCLOSED TO OTHERS IN HARD COPY OR ELECTRONIC FORM, REPRODUCED BY ANY MEANS, OR USED FOR ANY PURPOSE WITHOUT WRITTEN CONSENT OF CUMMINS INC.</small>				<small>FOR INTERPRETATION OF DIMENSIONING AND TOLERANCING, SEE ASME Y14.5-2009</small>
			<small>FIRST USED ON</small>	<small>CAD SHEET</small>
			<small>1 OF 4</small>	

REL NO	REV	NO	REVISION	DWG	CKD	APVD	DATE
ECO-166256	E	4	ZONE (A1) ADD EMERGENCY STOP CONNECTION	PT	MT	M_TULADHAR	28NOV16



SINGLE PHASE 120 Vac 60Hz
 FOLLOW REGIONAL REGULATIONS AND APPLICABLE ELECTRICAL CODES
 FOR INSTALLATION.



POWER SUPPLY:
 ALTERNATOR HEATER 30 W, 120 Vac
 BATTERY HEATER 50 W, 120 Vac
 OIL HEATER 50 W, 120 Vac
 BATTERY CHARGER 120 W, 120 Vac
 FUEL REGULATOR HEATER 4 W, 12 VDC

OPERATING TEMPERATURE THERMOSTAT (TSTAT):
 OFF ABOVE 30°F (-1°C)
 ON BELOW 10°F (-12°C)

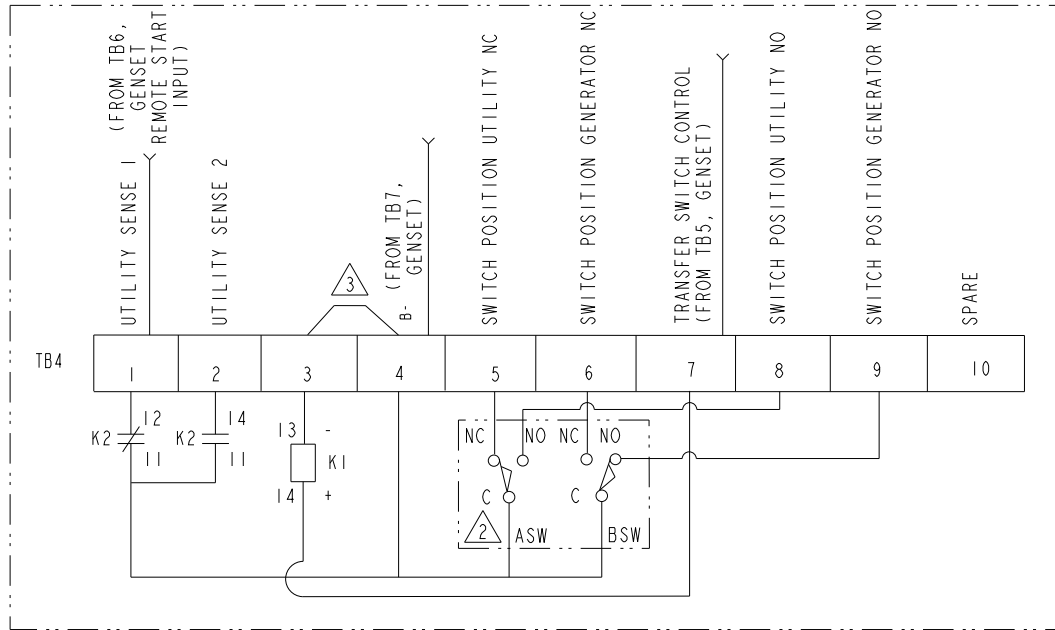
UNLESS OTHERWISE SPECIFIED, ALL DIMENSIONS ARE IN MILLIMETERS		SHW TO	DWG	CUMMINS POWER GENERATION	
DIM	X ± 1	0.00 - 4.99 +0.15/-0.08	DO NOT SCALE PRINT	J_KHARJUL	 DIAGRAM, WIRING
	.X ± 0.8	5.00 - 9.99 +0.20/-0.10		M_TULADHAR	
	.XX ± 0.38	10.00 - 17.49 +0.25/-0.13		M_TULADHAR	
		17.50 - 24.99 +0.30/-0.13			
ANG TOL	± 1.0°		DATE 24AUG15	SITE CODE	 A053F522
SCALE	1/1		FIRST USED ON	PGF	CAD SHEET
THIS DOCUMENT (AND THE INFORMATION SHOWN THEREON) IS CONFIDENTIAL AND PROPRIETARY AND SHALL NOT BE DISCLOSED TO OTHERS IN HARD COPY OR ELECTRONIC FORM, REPRODUCED BY ANY MEANS, OR USED FOR ANY PURPOSE WITHOUT WRITTEN CONSENT OF CUMMINS INC.			ARROW	D	2 of 4

ATS WIRING WITH RA100, RA200, RA100SE, RA200SE, RA400, RA400SE

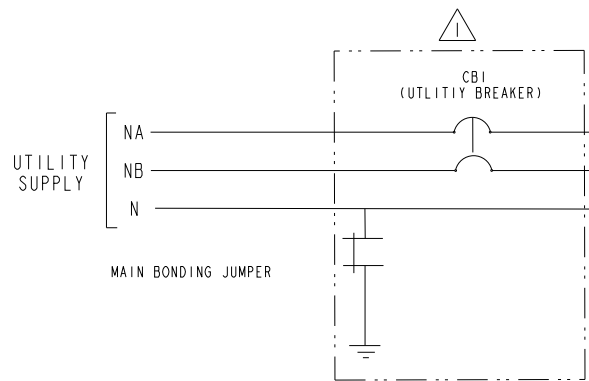
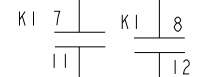
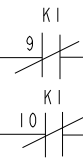
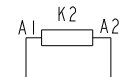
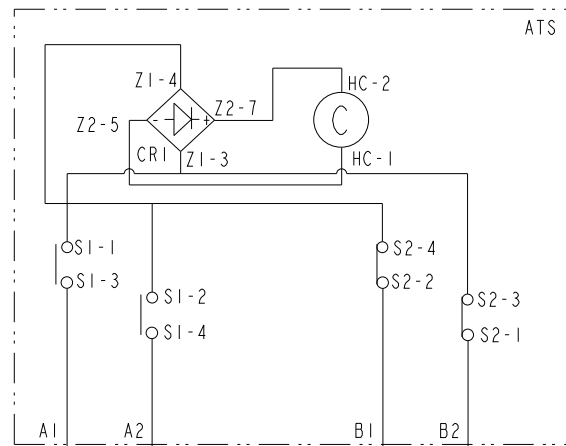
REL NO	REV	NO	REVISION	DRN	CKD	APVD	DATE
ECO-166256	E	--	---	PT	MT	M_TULADHAR	28NOV16

NOTES:

- 1 SERVICE ENTRANCE MODELS ONLY.
- 2 LOCATED ON THE SIDE OF THE ATS MECHANISM.
- 3 INSTALL JUMPER A034N106 SUPPLIED IN SHIPPING PARTS BAG WITH GENSET.



- TB4 TERMINAL BLOCK
- K1 RELAY
- ASW UTILITY POSITION AUXILIARY SWITCH
- BSW GENERATOR POSITION AUXILIARY SWITCH
- ATS AUTOMATIC TRANSFER SWITCH
- K2 UTILITY SENSE RELAY
- S1 OPEN WHEN ATS IS CONNECTED TO UTILITY
- S2 OPEN WHEN ATS IS CONNECTED TO GENERATOR
- CR1 BRIDGE RECTIFIER
- C ATS OPERATOR COIL
- CBI UTILITY CIRCUIT BREAKER



LOAD CONNECTIONS
LA LB N

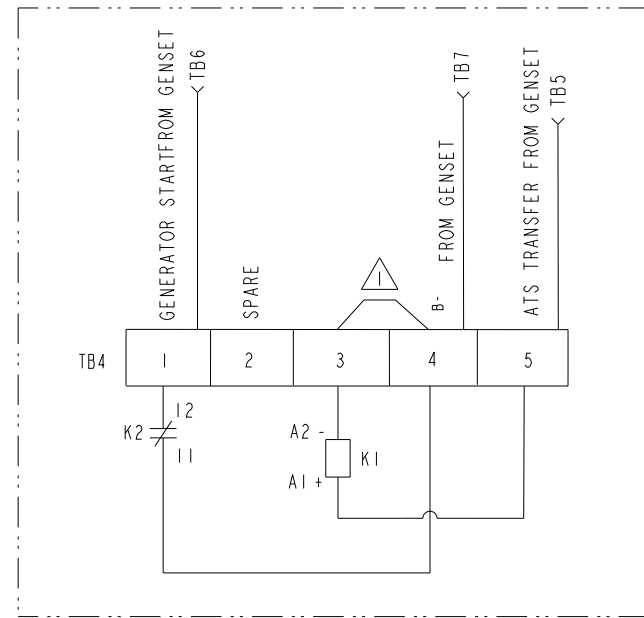
UNLESS OTHERWISE SPECIFIED, ALL DIMENSIONS ARE IN MILLIMETERS		DRN TO	DRN	CUMMINS POWER GENERATION	
DO NOT SCALE PRINT		J_KHARJUL	CKD	M_TULADHAR	
DATE 24AUG15		APVD	M_TULADHAR		DIAGRAM, WIRING
SITE CODE					
ANG TOL ± 1.0°		SCALE 1/1	FOR INTERPRETATION OF DIMENSIONING AND TOLERANCING, SEE ASME Y14.5-2009	PGF	DATE 24AUG15
DIM X ± 1		0.00- 4.99 +0.15/-0.08	FIRST USED ON		DATE 24AUG15
.X ± 0.8		5.00- 9.99 +0.20/-0.10	DRAWN BY		J_KHARJUL
.XX ± 0.38		10.00-17.49 +0.25/-0.13	CHECKED BY		M_TULADHAR
		17.50-24.99 +0.30/-0.13	APPROVED BY		M_TULADHAR
			DATE		24AUG15
			SITE CODE		
			PART NO		A053F522
			SHEET		D
			CAD SHEET		3 of 4

REL NO	REV	NO	REVISION	DRN	CKD	APVD	DATE
ECO-166256	E	--	---	PT	MT	M_TULADHAR	28NOV16

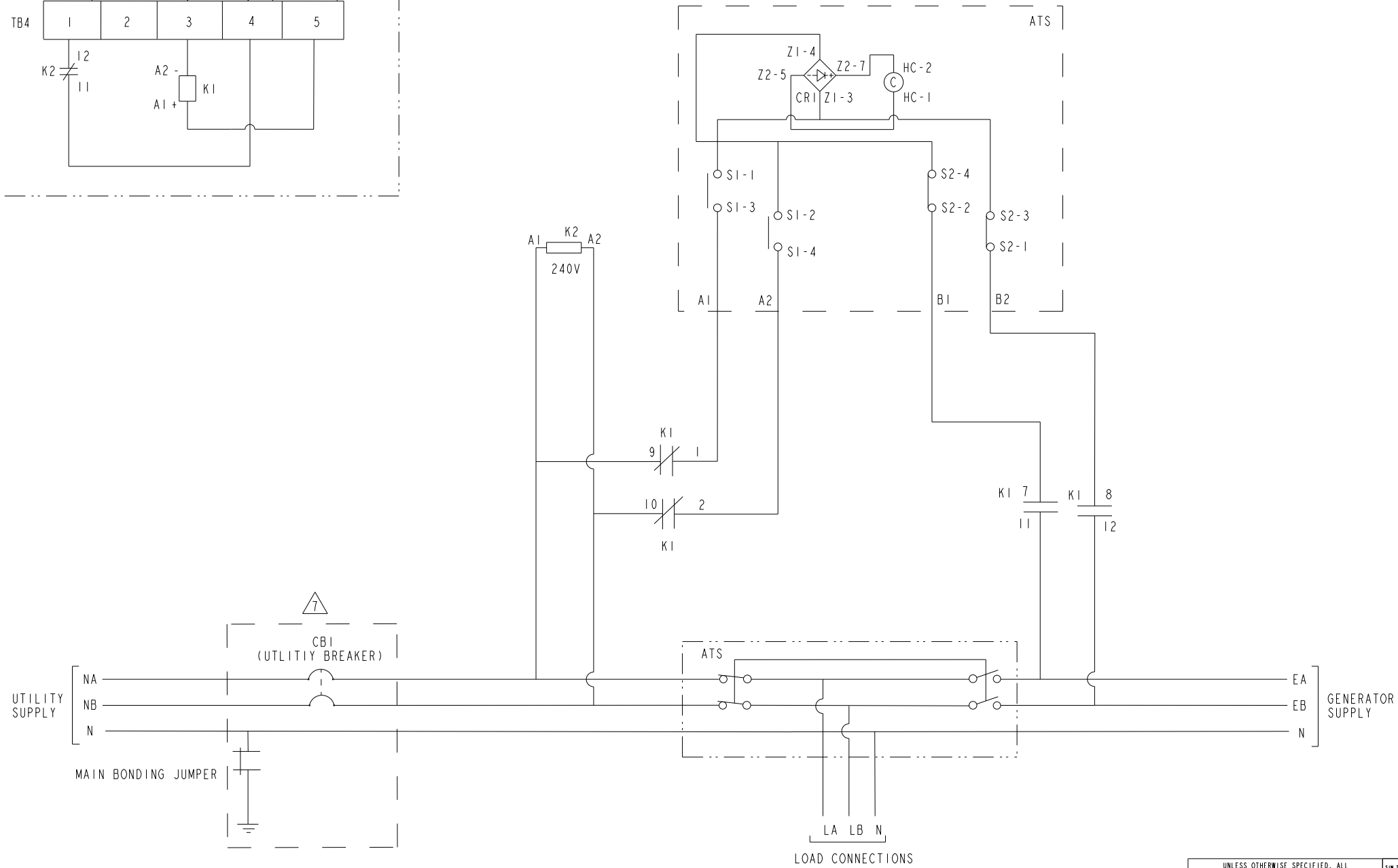
ATS WIRING WITH RA112L1

NOTE:

▲ INSTALL JUMPER A034N106 SUPPLIED IN SHIPPING PARTS BAG WITH GENSET.



- TB4 TERMINAL BLOCK
- K1 RELAY
- ATS AUTOMATIC TRANSFER SWITCH
- K2 UTILITY SENSE RELAY
- S1 OPEN WHEN ATS IS CONNECTED TO UTILITY
- S2 OPEN WHEN ATS IS CONNECTED TO GENERATOR
- CB1 UTILITY CIRCUIT BREAKER



UNLESS OTHERWISE SPECIFIED, ALL DIMENSIONS ARE IN MILLIMETERS		SHW TO	DWN J_KHARJUL		CUMMINS POWER GENERATION	
DO NOT SCALE PRINT			CKD M_TULADHAR		DIAGRAM, WIRING	
DIM	X ± 1	0.00- 4.99 +0.15/-0.08	APVD M_TULADHAR	SITE CODE	A053F522	
	.X ± 0.8	5.00- 9.99 +0.20/-0.10	DATE 24AUG15	PGF	4 of 4	
	.XX ± 0.38	10.00-17.49 +0.25/-0.13	FIRST USED ON	ARROW		
ANG TOL	± 1.0°	17.50-24.99 +0.30/-0.13	FOR INTERPRETATION OF DIMENSIONING AND TOLERANCING, SEE ASME Y14.5-2009	SCALE		
	1/1		THIS DOCUMENT (AND THE INFORMATION SHOWN THEREON) IS CONFIDENTIAL AND PROPRIETARY AND SHALL NOT BE DISCLOSED TO OTHERS IN HARD COPY OR ELECTRONIC FORM, REPRODUCED BY ANY MEANS, OR USED FOR ANY PURPOSE WITHOUT WRITTEN CONSENT OF CUMMINS INC.			

Part A053F522 E

Description	Legacy Name	External Regulations	Application Status	Release Phase Code	Security Classification	Alternates
DIAGRAM,WIRING	A053F522	No External Regulations Apply	Production Only	Production	Confidential	

Part Specifications :A053F522 E

Name	Description	Legacy Name
A030B356	SPECIFICATION,MATERIAL	CES10903
A053F523	DRAWING,ENGINEERING	A053F523