

# Load Management Kit

## Description

The Load Management Kit is used with the Air Cooled Residential generator sets (GSBA/B/C). This kit will allow the generator set to shed electrical loads when the demand becomes too high. Disconnected loads can be reconnected when generator set capacity is available. The module contains 2 contactors that can handle 50A load each. Knockouts are located on all sides of the box for easy wire routing. The box can be surface or flush mounted.

## Features

UL listed  
Clear labeling for easy installation

## Specifications

### Relay

**Number per modules** – 2x2 pole (normally closed)

**Load amps** – 50A

**Load voltage** – 120VAC or 240VAC

**Coil voltage** – 12 VDC

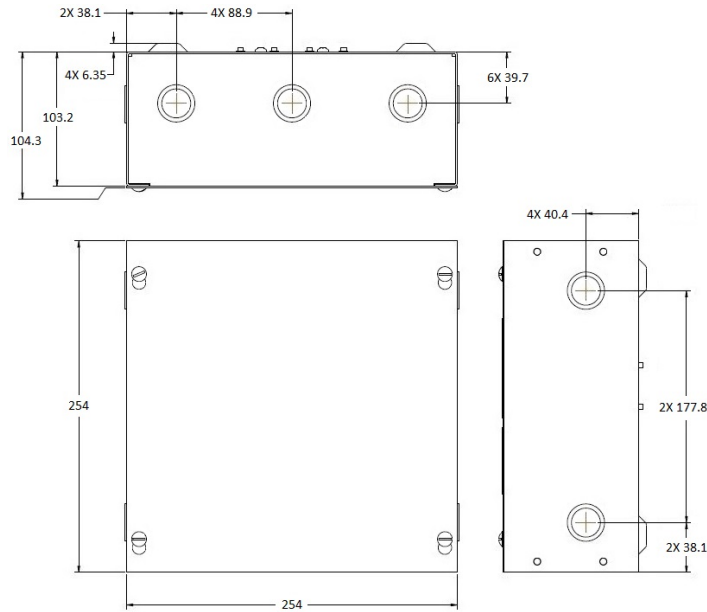
**Connections** – Mechanical lugs, #14 - #4 AWG copper or aluminum range

### Box

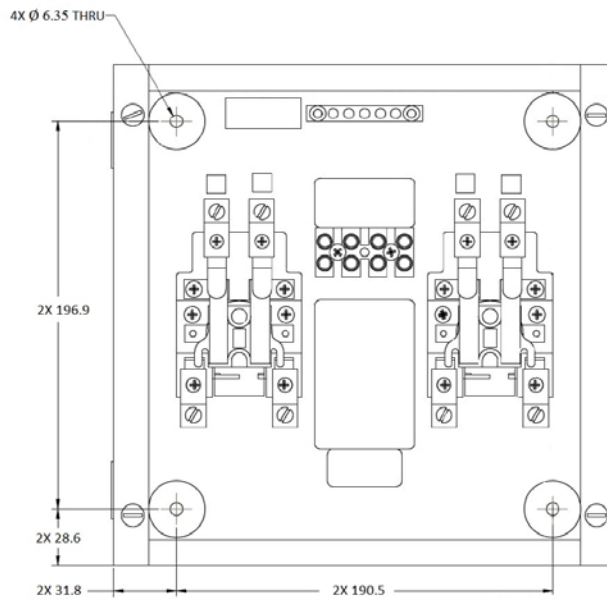
**Material** – Steel, painted ANSI light gray

**Rated** – NEMA 1 (indoor use)

**Mounting** – Surface or flush



**Outline drawing**



**Mounting drawing**

**Americas**

1400 73rd Avenue N.E.  
 Minneapolis, MN 55432 USA  
 Phone: 763 574 5000  
 Fax: 763 574 5298

**Europe, CIS, Middle East and Africa**

Manston Park Columbus Ave.  
 Manston Ramsgate  
 Kent CT 12 5BF United Kingdom  
 Phone 44 1843 255000  
 Fax 44 1843 255902

**Asia Pacific**

10 Toh Guan Road #07-01  
 TT International Tradepark  
 Singapore 608838  
 Phone 65 6417 2388  
 Fax 65 6417 2399

**Warning:** Back feed to a utility system can cause electrocution and/or property damage. Do not connect generator sets to any building electrical system except through an approved device or after building main switch is open.

**Warning:** For professional use only. Must be installed by a qualified service technician. Improper installation presents hazards of electrical shock and improper operation, resulting in severe personal injury and/or property damage.

