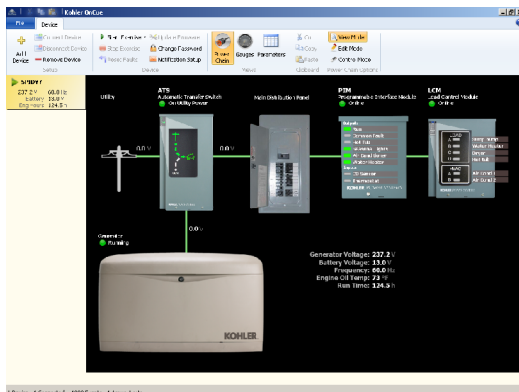


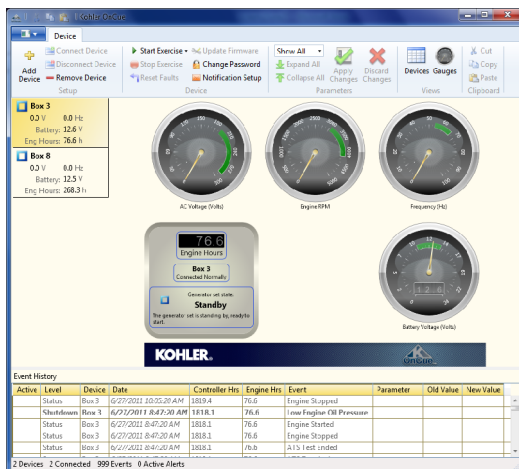
Residential/Light Commercial Generator Accessories

KOHLER POWER SYSTEMS

Kohler® OnCue® Generator Management System Software



OnCue® User Interface - Power Chain View



OnCue® User Interface - Gauges View

Applicable Models

- RDC2 or DC2 Controller
 - 14/20RESA and 14/20RESAL
 - 48RCL
- RDC or DC Controller
 - 14/20RES and 14/20RESL

OnCue® Features

- **NEW!** Power Chain View which monitors your Kohler® generator set, RXT automatic transfer switch, Load Control Module (LCM), and Programmable Interface Module (PIM) from any location in the world with Internet access.*
- **NEW!** Control home automation when generator set is paired with a Programmable Interface Module (PIM). Remotely turn on or off appliances, outdoor lighting, storm shutters, etc.*
- **NEW!** RDC2/DC2 controllers have built-in Ethernet capability.
- Receive generator set start/stop and fault messages by email or SMS text message. Kohler® OnCue® server sends email and text messages anytime, without requiring your computer to be turned on.
- Install OnCue software on one or more personal computers.
- Monitor multiple generator sets. Navigation panel displays status information for multiple generator systems and allows easy selection of one generator set for detailed monitoring and control.
- Start exercises from your computer.
- Stop the generator set exercise and clear faults from your computer.
- View time- and date-stamped event history listing generator set starting and stopping, faults, and notifications.
- Simple connection and setup – just enter generator set serial number, controller password, and activation code (if required). No router setup is required.
- Controller password and generator set serial number protect against access by unauthorized users.
- All Ethernet communication is fully authenticated and encrypted for privacy.

* RXT ATS, LCM, and PIM can be used with generator sets equipped with the RDC2 or DC2 controller.

View System Operation Data

Generator Set

- Generator set running or stopped
- Generator output frequency, Hz
- Generator output voltage, VAC
- Engine speed, RPM
- Engine starting battery voltage, VDC
- Engine run time, hours
- Fault indication with description
- Generator operation event history
- Status information for multiple generator sets displayed in the navigation panel

ATS (RXT only)*

- Source availability
- ATS position

Load Control Module (LCM)*

- View current loads and shed loads
- Dual color LEDs for each load indicate load status (powered or shed) and flash to indicate a test
- Change load labels to identify what loads are powered and shed
- See G6-120 for more information

Programmable Interface Module (PIM)*

- View relay status
- Green/red LEDs to indicate on/off
- Change input and output labels
- See G6-121 for more information

* RXT ATS, LCM, and PIM can be used with generator sets equipped with the RDC2 or DC2 controller.

Remote Control/Home Automation

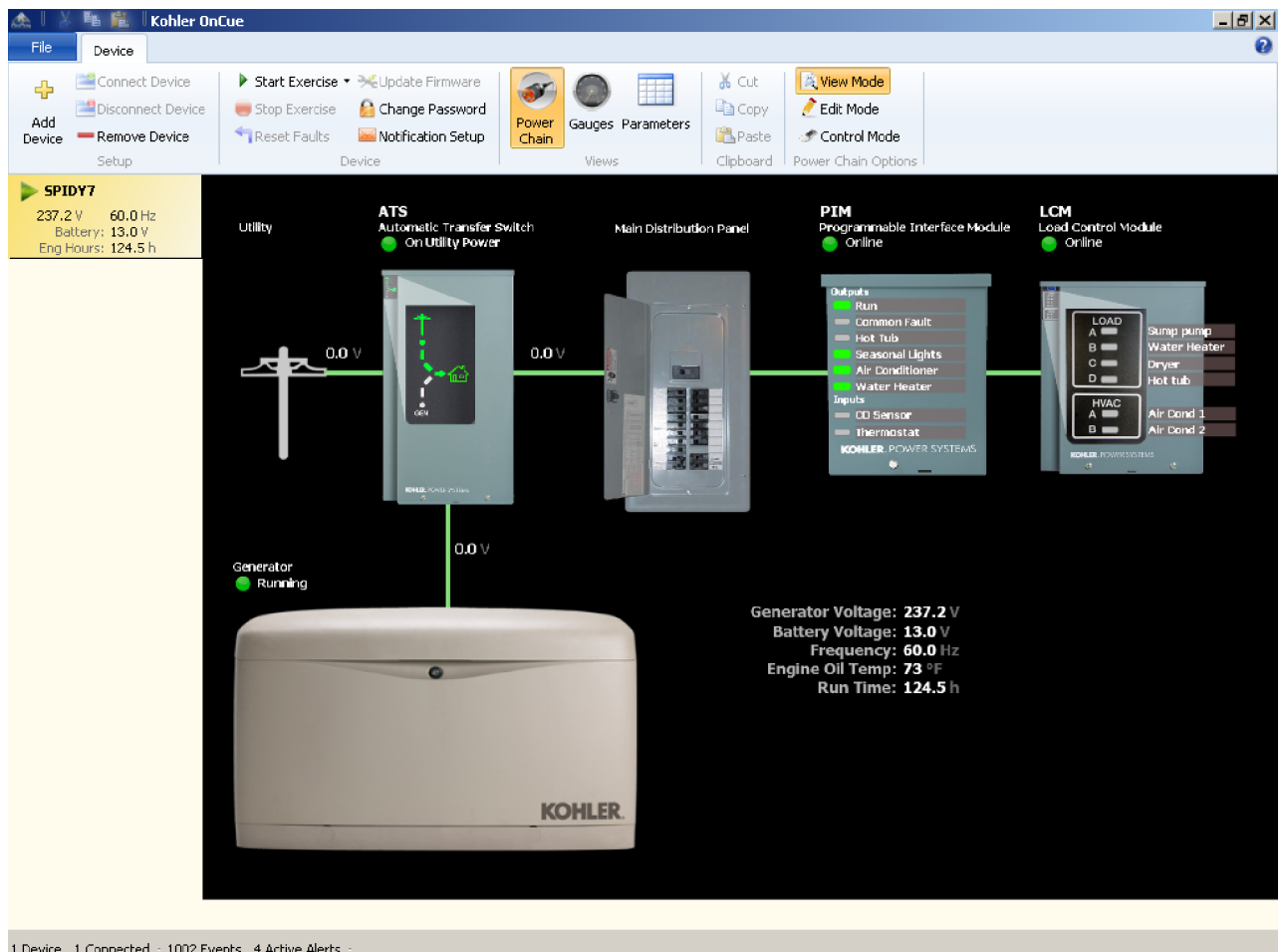
Generator Set

- Start/Stop exercises remotely
- Clear or reset faults remotely

Programmable Interface Module (PIM)*

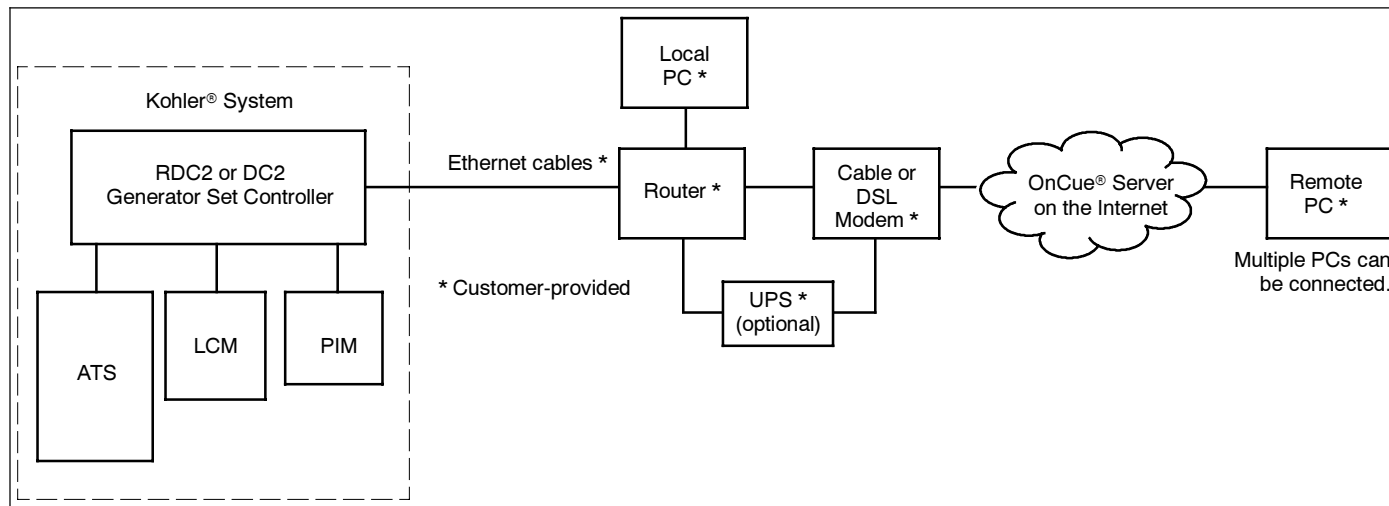
- Turn on and off relays remotely

Power Chain View

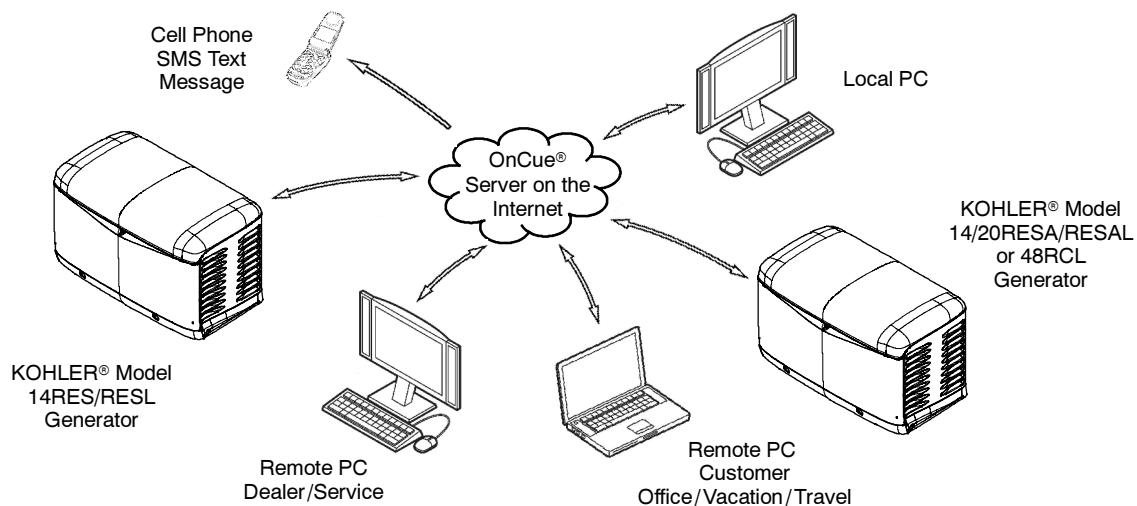
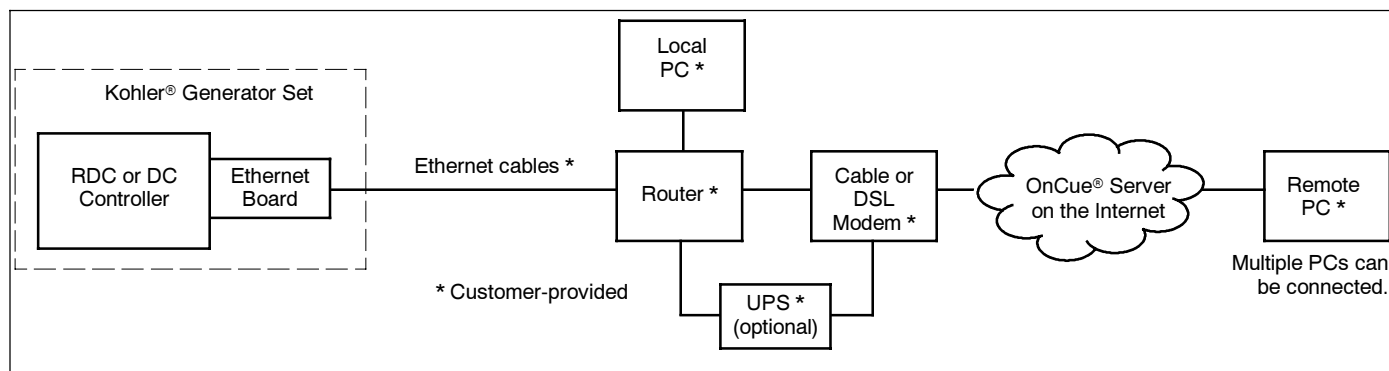


Typical Connections

RDC2/DC2 Controller



RDC/DC Controller



Ethernet Option Board Specifications (RDC/DC controller only)

- Environmental specifications:
 - Operating temperature: -30°C to 70°C (-22°F to 158°F)
 - Storage temperature: -40°C to 85°C (-40°F to 185°F)
 - Humidity: 5-95% non-condensing
- Standard RJ45 jack for network connection
- Standard 10/100 Ethernet

System Requirements

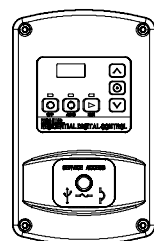
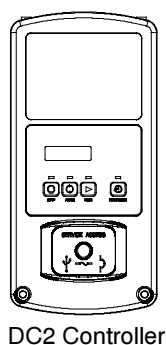
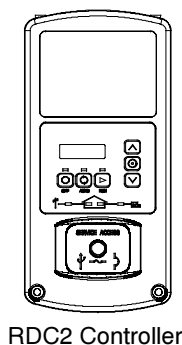
- OnCue software
(download from www.KohlerPower.com/OnCue)
- Personal computer (PC) with Microsoft® Windows® 7, Windows Vista®, or Windows XP®
- 1 GB of RAM
- Up to 500 MB of available hard disk space may be required
- Always-on Internet access (for example, cable, DSL, or phone line modem connected 24 hours)
- Internet router and network cable for connection to Ethernet
- Uninterruptible power supply (UPS) for modem and router (optional)

Microsoft® Windows®, Windows XP®, and Windows Vista® are registered trademarks of Microsoft Corporation.

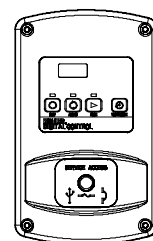
OnCue® System Kit

- RDC2/DC2 controller
 - Operation manual
 - Activation code decal
 - Ethernet connector
- RDC/DC controller
 - OnCue Ethernet option board
 - Installation instructions
 - Operation manual

Controllers



RDC Controller



DC Controller

Availability is subject to change without notice. Kohler Co. reserves the right to change the design or specifications without notice and without any obligation or liability whatsoever. Contact your local Kohler® generator distributor for availability.

DISTRIBUTED BY: