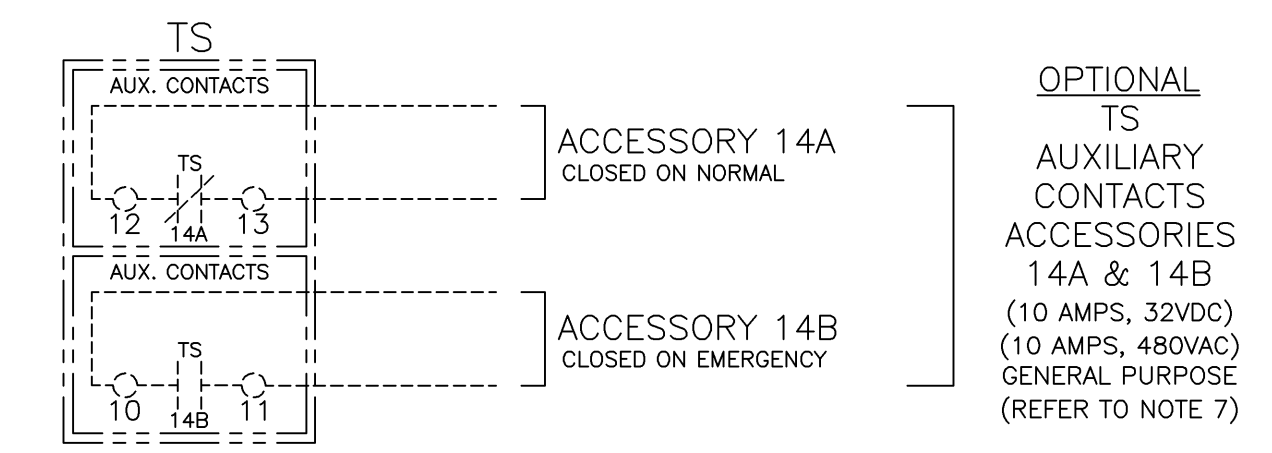
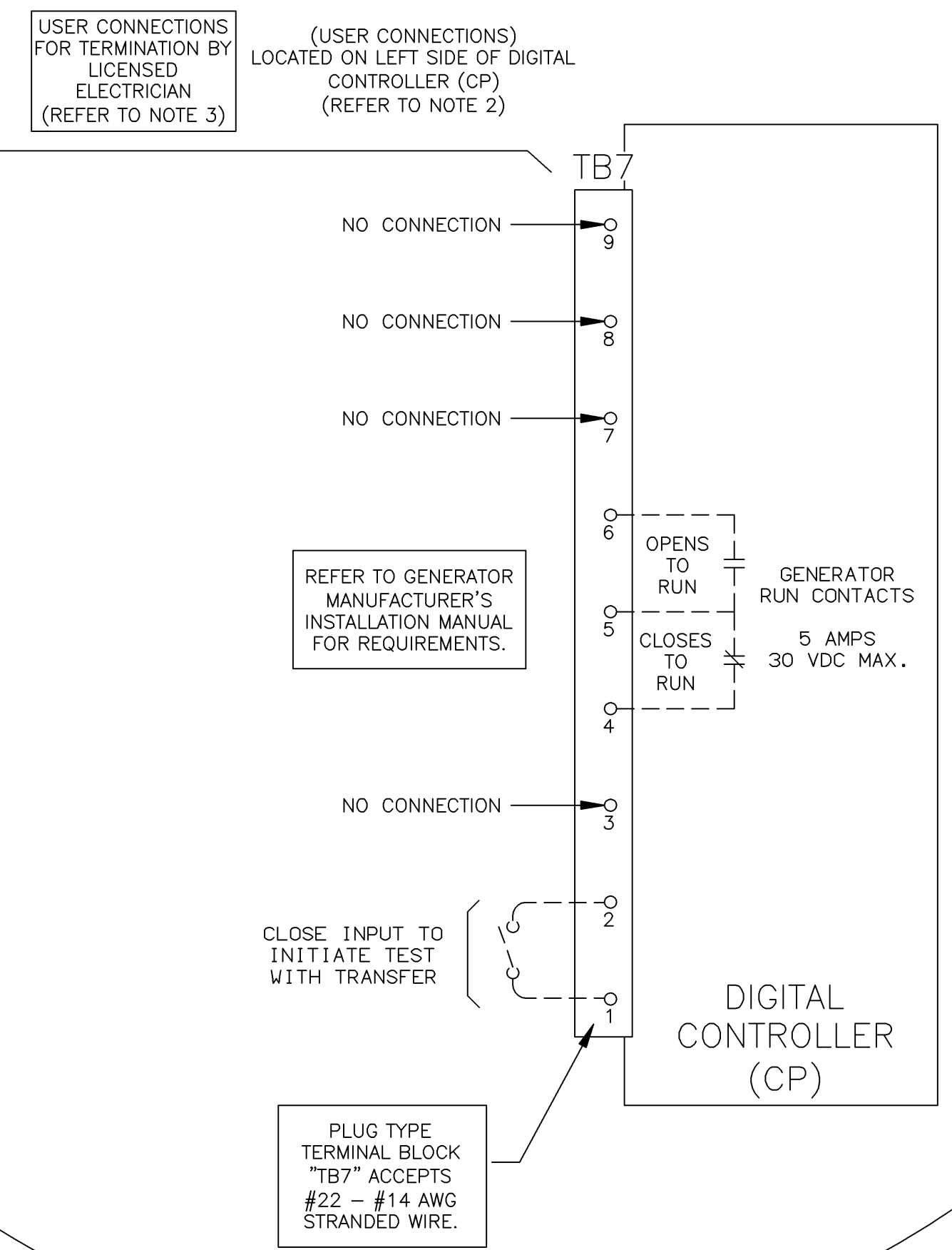


FIELD CONNECTIONS



NOTES

1. THE TRANSFER SWITCH AND CONTROLS ARE SHOWN DE-ENERGIZED (ALL POWER OFF) WITH THE TRANSFER SWITCH CONTACTS CLOSED ON THE PREFERRED SOURCE.
2. THE SYMBOL ○ INDICATES USER CONNECTION POINTS TO BE TERMINATED BY A LICENSED ELECTRICIAN.
3. THIS IS A WIRING DIAGRAM ONLY! - REFER TO THE MANUAL. A MANUAL IS SUPPLIED WITH THE TRANSFER SWITCH. REFER TO IT AND THE GENERATOR MANUFACTURER'S INSTALLATION LITERATURE PRIOR TO INSTALLATION AND OPERATION OF THE TRANSFER SWITCH.
4. THE TRANSFER SWITCH AND IT'S CONTROLS ARE LISTED UNDER THE UNDERWRITER LABORATORIES (UL) STANDARD FOR TRANSFER SWITCH EQUIPMENT, UL-1008.
5. THE TRANSFER SWITCH MUST BE PROTECTED BY SUITABLY SIZED CIRCUIT BREAKERS FEEDING THE PREFERRED AND ALTERNATE SOURCE TERMINALS. THE RATINGS OF THE CIRCUIT BREAKERS MUST BE BASED ON THE REQUIREMENTS OF THE NATIONAL ELECTRICAL CODE (NEC) FOR IT'S NAMEPLATE AMPERE AND SHORT CIRCUIT WITHSTAND RATINGS.

6. POWER CONNECTIONS TABLE:

POWER CONNECTIONS	
SIZES OF UL LISTED SOLDERLESS SCREW TYPE TERMINALS FOR MAIN POWER CONNECTIONS	
SWITCH RATING (AMPS)	RANGE OF POWER CONDUCTOR SIZES
100 - 230	ONE #14 TO 4/0 AWG Al or Cu

7. OPTIONAL ACCESSORY 14A & 14B - TRANSFER SWITCH AUX. POSITION INDICATING CONTACTS. ONE (1) FORM A CONTACT TO INDICATE THE CONNECTION OF THE TRANSFER SWITCH TO NORMAL (14A) AND ONE (1) FOR EMERGENCY (14B). CONTACTS RATED 10 AMPS, 32 VDC, 480 VAC. (AVAILABLE FOR FIELD INSTALLATION. IF REQUIRED ORDER KIT #K373314)

TS FRAME	ASCO SERIES	POLES		AMPS	VOLT CODE	CONTROL CODE	ENCLOSURE CODE	VOLTAGE CODES 1 PHASE, 3 WIRE 50/60 Hz		CONTROLLER CODE ALL UNITS	POLE CODES ALL UNITS		ENCLOSURE CODES
		NEUTRAL	PHASE					A SOLID	2 POLES				
D	165	A	2	100 200 230	F	3X	BLANK C F G	F	220-240V	3X	A	2	BLANK OPEN C TYPE 1 F TYPE 3R G TYPE 4

WIRING DIAGRAM
ASCO 165 SERIES
 AUTOMATIC TRANSFER SWITCH
 WITH GROUP 3 DIGITAL CONTROLLER
 RATED 240 VAC (MAXIMUM)
 FOR USE IN OPTIONAL STANDBY SYSTEMS

PROJECT NAME: _____

WIRING DIAGRAM

D165 SERIES ATS, 100-230A

W/GRP 3 CONTROLS.

BY	DATE	MANUFACTURING TOLERANCES TO BE IN ACCORDANCE WITH ASCO PROCEDURE MP-1-003. FOR PLASTIC PARTS SEE MP-1-055	ASSEM. REF. NO.
SDH	05/99		

COMPUTER GENERATED DRAWING

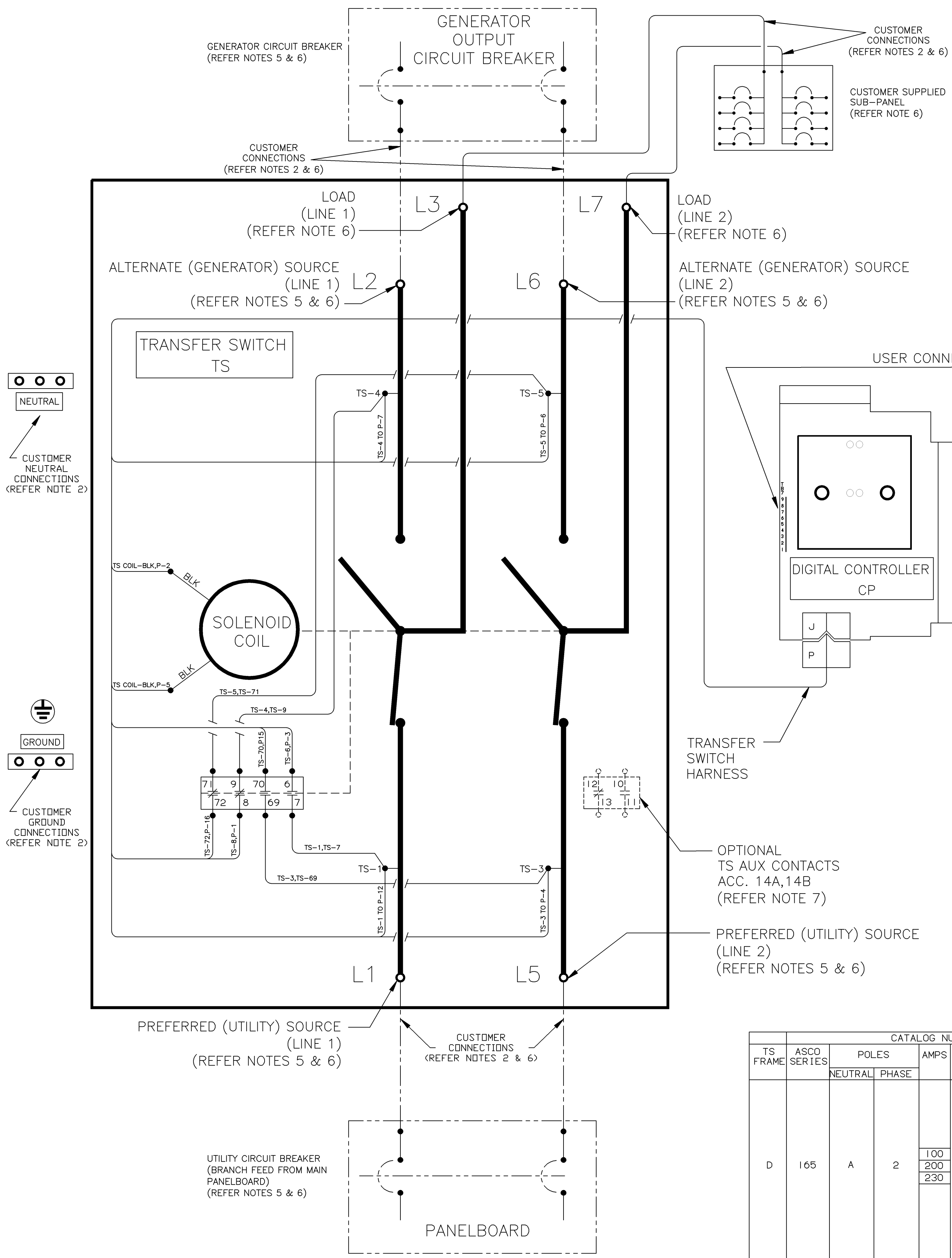
SCALE: 1:1 SIZE: DS

DWG. NO: 702704

DRAWING M. ECN NO. 218368 SHEET 1 OF 1

PROPERTY OF ASCO POWER TECHNOLOGIES. USE PERMITTED FOR OUR WORK ONLY. ALL RIGHTS OF DESIGN OR INVENTION ARE RESERVED.

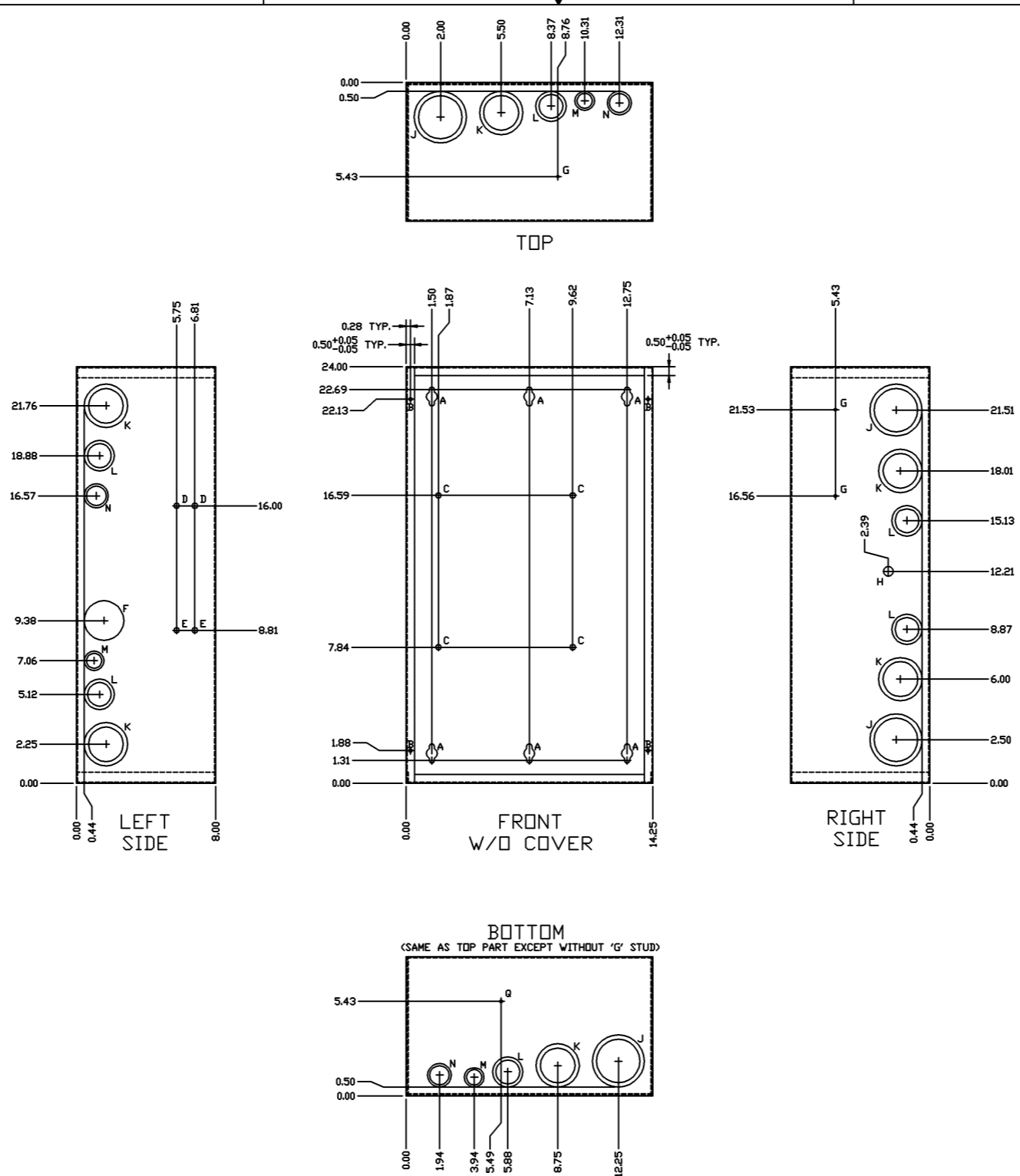
ASCO POWER TECHNOLOGIES, L.P.
 FLORHAM PARK, NEW JERSEY 07932 U.S.A.



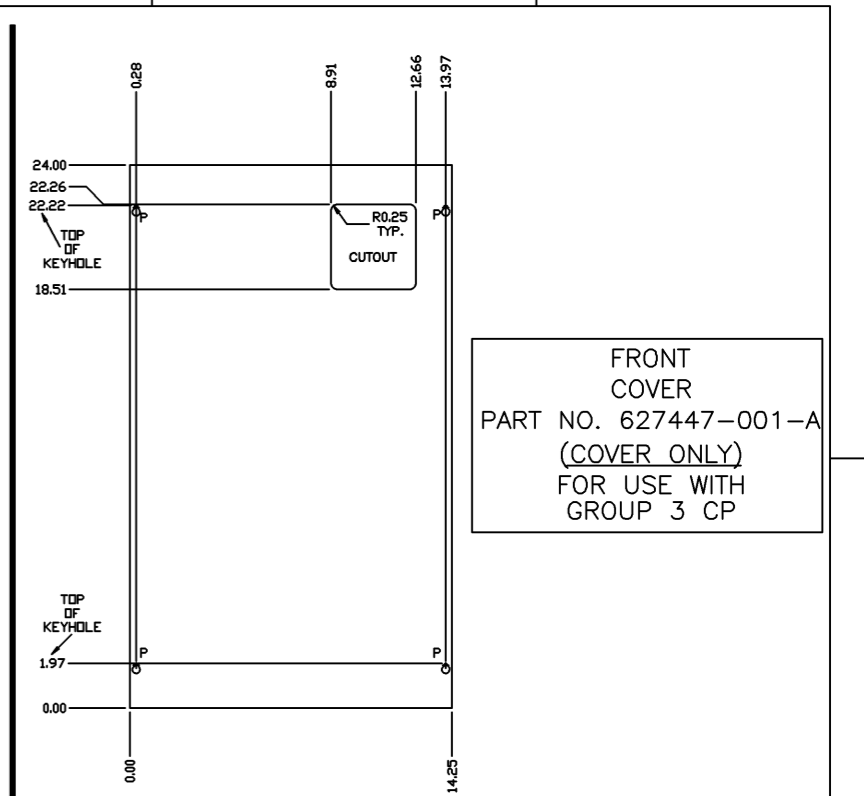
HOLE DATA		QTY.
A	0.31 DIA. MOUNTING HOLE (2 PER KEYHOLE) 0.50 DIA. KEY HOLE (APPROVED MANUFACTURER'S STANDARD)	6
B	HOLE FOR 0.190 DIA., 10-32, THREAD CUTTING, SLOTTED PAN HEAD COVER MOUNTING SCREWS. (SCREWS PROVIDED BY ASCO).	4
C	0.249/0.252 DIA. FOR 0.250-20 X 0.50 LONG PEN. ENGRG. & MFG. CO. SELF CLINCHING CAPTIVE STUD PN FH-0420-8-Z1 MASK THREADS DURING PAINTING.	4
D	0.31 DIA. HOLE	2
E	0.249/0.252 DIA. FOR 0.250-20 X 0.75 LONG PEN. ENGRG. & MFG. CO. SELF CLINCHING CAPTIVE STUD PN FH-0420-16-Z1 MASK THREADS DURING PAINTING.	2
F	2.28 DIA. KNOCKOUT (ACTUAL DIA.)	1
G	0.163/0.166 DIA. FOR 0.164-32 X 0.312 LONG PEN. ENGRG. & MFG. CO. SELF CLINCHING CAPTIVE STUD PN FH-832-5-Z1 MASK THREADS DURING PAINTING.	3
H	0.56 DIA. KNOCKOUT (ACTUAL DIA.)	1
J	2.0/2.5 COMBINATION KNOCKOUT (TRADE SIZE)	6
K	1.5/2.0 COMBINATION KNOCKOUT (TRADE SIZE)	4
L	1.25/1.5 COMBINATION KNOCKOUT (TRADE SIZE)	6
M	0.5/0.75 COMBINATION KNOCKOUT (TRADE SIZE)	4
N	1.0/1.25 COMBINATION KNOCKOUT (TRADE SIZE)	2
P	KEYHOLE FOR 0.190 DIA., 10-32, THREAD CUTTING, SLOTTED PAN HEAD COVER MOUNTING SCREWS. (SCREWS PROVIDED BY ASCO).	4/COVER
Q	0.163/0.166 DIA. HOLE (THIS HOLE MAY BE OMITTED AT MANUFACTURER'S DISCRETION).	1

ENCLOSURE SPECIFICATIONS

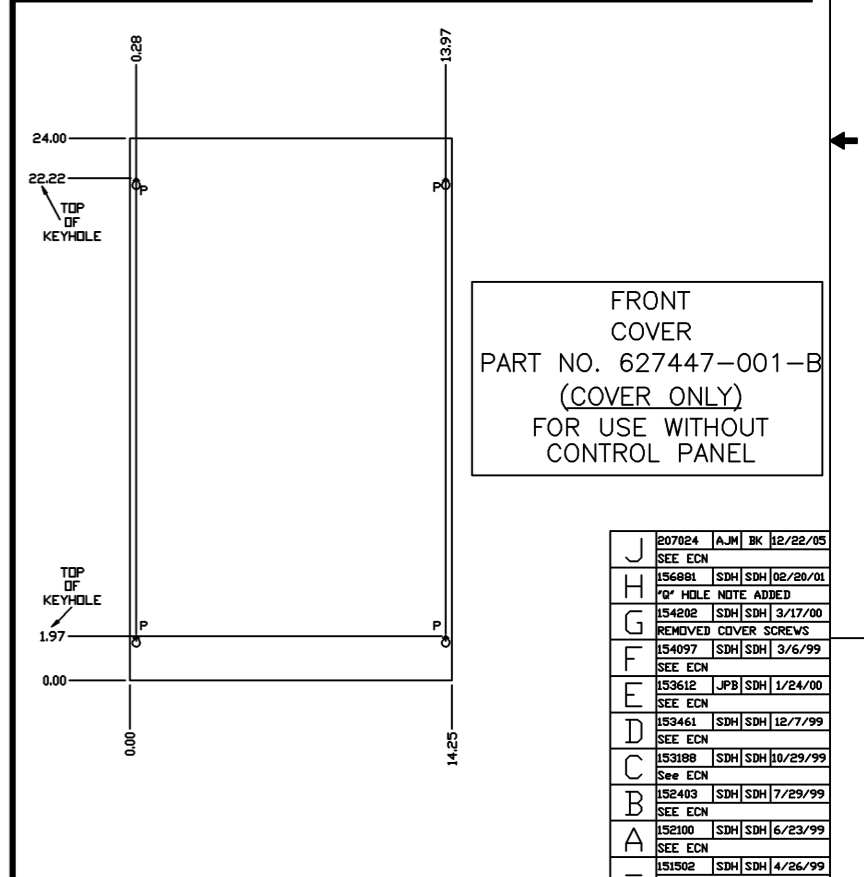
- UL LISTED, TYPE 1 ENCLOSURE, LABELED BY VENDOR.
- REMOVABLE FRONT COVER, 10-32 X 0.5 LONG
THREAD CUTTING, TYPE 23 POINT, ZINC PLATED STEEL SLOTTED PAN HEAD SCREWS PROVIDED BY **ASCO**
- ALL DIMENSIONS ARE OUTSIDE.
- TO BE CONSTRUCTED IN ACCORDANCE WITH **ASCO** SWITCH DIVISION COMPONENT SPECIFICATION SCS 01-1.
- MATERIAL: 16 GAGE SHEET STEEL.
- FINISHES:
ENCLOSURE, PN 627447-001:
LIGHT GRAY (ANSI #61), **ASCO** SPEC. C-401, CLASS 2 FINISH.
COVERS, PNs 627447-001-A & -B:
LIGHT GRAY (ANSI #61), **ASCO** SPEC. C-401, CLASS 2 FINISH.
- MAXIMUM BURR ALLOWANCE: .005.
- MAXIMUM BEND ALLOWANCE: .110



ENCLOSURE PART NO. 627447-001 (WITHOUT COVER)



FRONT COVER
PART NO. 627447-001-A
(COVER ONLY)
FOR USE WITH
GROUP 3 CP



FRONT COVER
PART NO. 627447-001-B
(COVER ONLY)
FOR USE WITHOUT
CONTROL PANEL

CHANGE LETTER	ECN NO.	BY	APP.	DATE
J	207024	AJM	BK	12/22/05
	SEE ECN			
H	156881	SDH	SDH	02/20/01
	Ø" HOLE NOTE ADDED			
G	154202	SDH	SDH	3/17/00
	REMOVED COVER SCREWS			
F	154097	SDH	SDH	3/6/99
	SEE ECN			
E	153612	JPB	SDH	1/24/00
	SEE ECN			
D	153461	SDH	SDH	12/7/99
	SEE ECN			
C	153188	SDH	SDH	10/29/99
	SEE ECN			
B	152403	SDH	SDH	7/29/99
	SEE ECN			
A	152100	SDH	SDH	6/23/99
	SEE ECN			
-	151502	SDH	SDH	4/26/99
	ISSUE			

PROJECT NAME:	ENCLOSURE	TYPE 1	SERIES 165, 30-230 A
THIRD ANGLE PROJECTION	COMPUTER GENERATED DRAWING	SCALE: 4:1	FILE
PROPERTY OF AUTOMATIC SWITCH COMPANY. USE PERMITTED FOR OUR WORK ONLY. ALL RIGHTS OF DESIGN OR INVENTION ARE RESERVED.	Automatic Switch Co.	FLORHAM PARK, NEW JERSEY 07832 PRINTED IN U.S.A.	DS627447-001