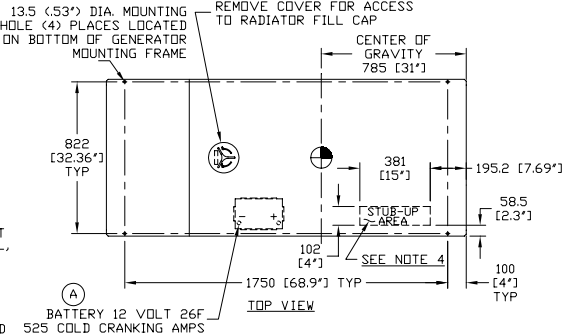


0G0325

ENGINE/KW	ENCLOSURE MATERIAL	WEIGHT DATA		
		WEIGHT (GENSET ONLY) KG (LBS)	WEIGHT (WOODEN SHIPPING CRATE/SKID) KG (LBS)	SHIPPING WEIGHT (SKID AND GENSET) KG (LBS)
E 2.4L/25KW	STEEL	631 (1393)	44 (98)	676 (1491)
	ALUMINUM	579 (1276)	44 (98)	623 (1374)
E 2.4L/35KW	STEEL	631 (1393)	44 (98)	676 (1491)
	ALUMINUM	579 (1276)	44 (98)	623 (1374)
E 2.4L/45KW	STEEL	641 (1414)	44 (98)	686 (1512)
	ALUMINUM	588 (1297)	44 (98)	633 (1395)

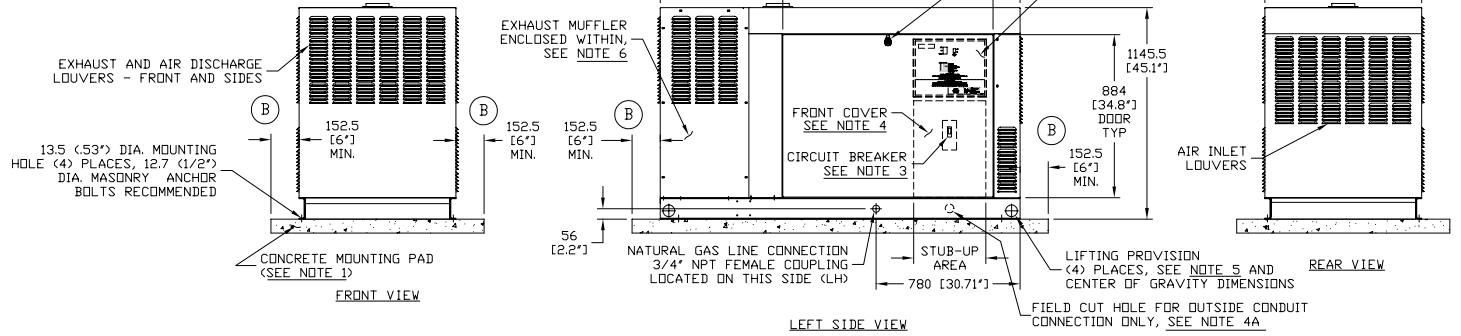


SERVICE ITEM ACCESSIBILITY CHART

SERVICE ITEM	2.4L
DIL FILL CAP	EITHER DOOR
DIL DIP STICK	THRU RIGHT DOOR
DIL FILTER	THRU RIGHT DOOR
DIL DRAIN HOSE	THRU RIGHT DOOR
RADIATOR DRAIN HOSE	THRU LEFT DOOR
AIR CLEANER ELEMENT	EITHER DOOR
SPARK PLUGS	THRU RIGHT DOOR
MUFFLER	SEE NOTE 6
FAN BELT	SEE NOTE 6
BATTERY	THRU LEFT DOOR

- NOTES:
- MINIMUM RECOMMENDED CONCRETE PAD SIZE: 1155 (45.5') WIDE X 2255 (88.8') LONG. REFERENCE INSTALLATION GUIDE SUPPLIED WITH UNIT FOR CONCRETE PAD GUIDELINES.
 - ALLOW SUFFICIENT ROOM ON ALL SIDES OF THE GENERATOR FOR MAINTENANCE AND SERVICING. THIS UNIT MUST BE INSTALLED IN ACCORDANCE WITH CURRENT APPLICABLE NFPA 37 AND NFPA 70 STANDARDS AS WELL AS ANY OTHER FEDERAL, STATE AND LOCAL CODES FOR MINIMUM DISTANCES FROM OTHER STRUCTURES.
 - CIRCUIT BREAKER INFORMATION: SEE SPECIFICATION SHEET WITHIN OWNERS MANUAL.
 - INSIDE STUB-UP AREA FOR AC LOAD LEAD CONDUIT CONNECTION, NEUTRAL CONNECTION, BATTERY CHARGER 120 VOLT AC (5 AMP MAX.) CONNECTION, AND ACCESS TO BATTERY SWITCH CONTROL WIRES. REMOVE FRONT COVER FOR ACCESS.
 - FIELD CUT HOLE IS ONLY REQUIRED FOR MOUNTING OF GENERATOR ON AN EXISTING PAD.
 - REFERENCE OWNERS MANUAL FOR LIFTING WARNINGS.
 - REMOVE EITHER LEFT OR RIGHT HAND SIDE PANEL TO ACCESS EXHAUST MUFFLER AND FAN BELT.

REFERENCE OWNERS MANUAL FOR PERIODIC REPLACEMENT PART LISTINGS



GENERAC POWER SYSTEMS OWNS THE COPYRIGHT OF THIS DRAWING WHICH IS SUPPLIED IN CONFIDENCE AND MUST NOT BE USED FOR ANY PURPOSE OTHER THAN FOR WHICH IT IS SUPPLIED WITHOUT THE EXPRESS WRITTEN CONSENT OF GENERAC POWER SYSTEMS.
 © GENERAC POWER SYSTEMS 2001

INSTALLATION DRAWING
 2.4L 25 KW, 35KW & 45KW

GENERAC POWER SYSTEMS
Waukesha
 P.O. BOX 8
 WAUKESHA, WIS. 53187

INSTALLATION DRAWING

FILE NAME	0G0325-E.DWG	SIZE	B
SCALE	1 = 20	FIRST USE	QT SERIES
DWG NO.	0G0325	REV	E