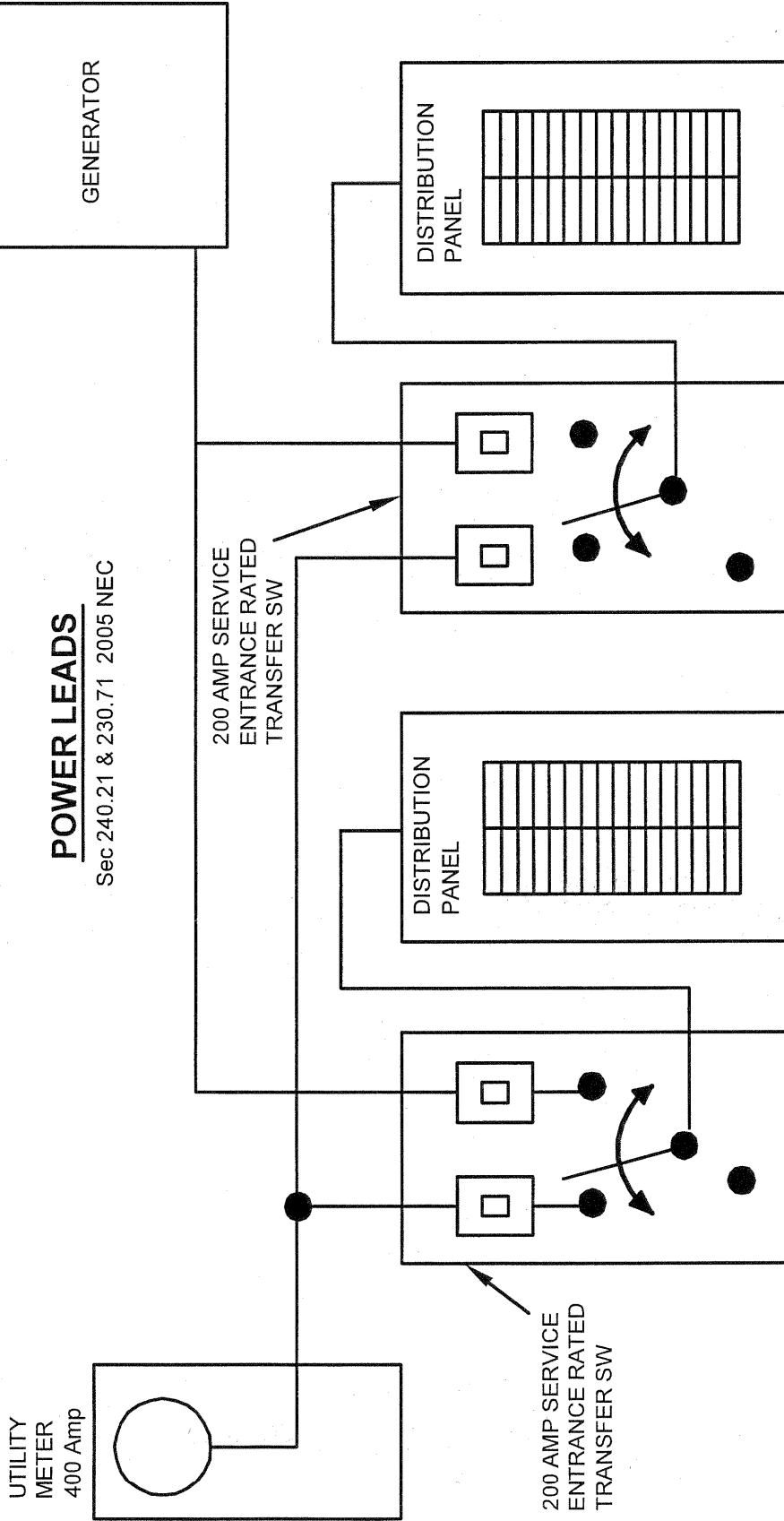


# Typical connections for 2 Service Entrance Rated Transfer Switches with connected Distribution Panels

UTILITY METER  
400 Amp

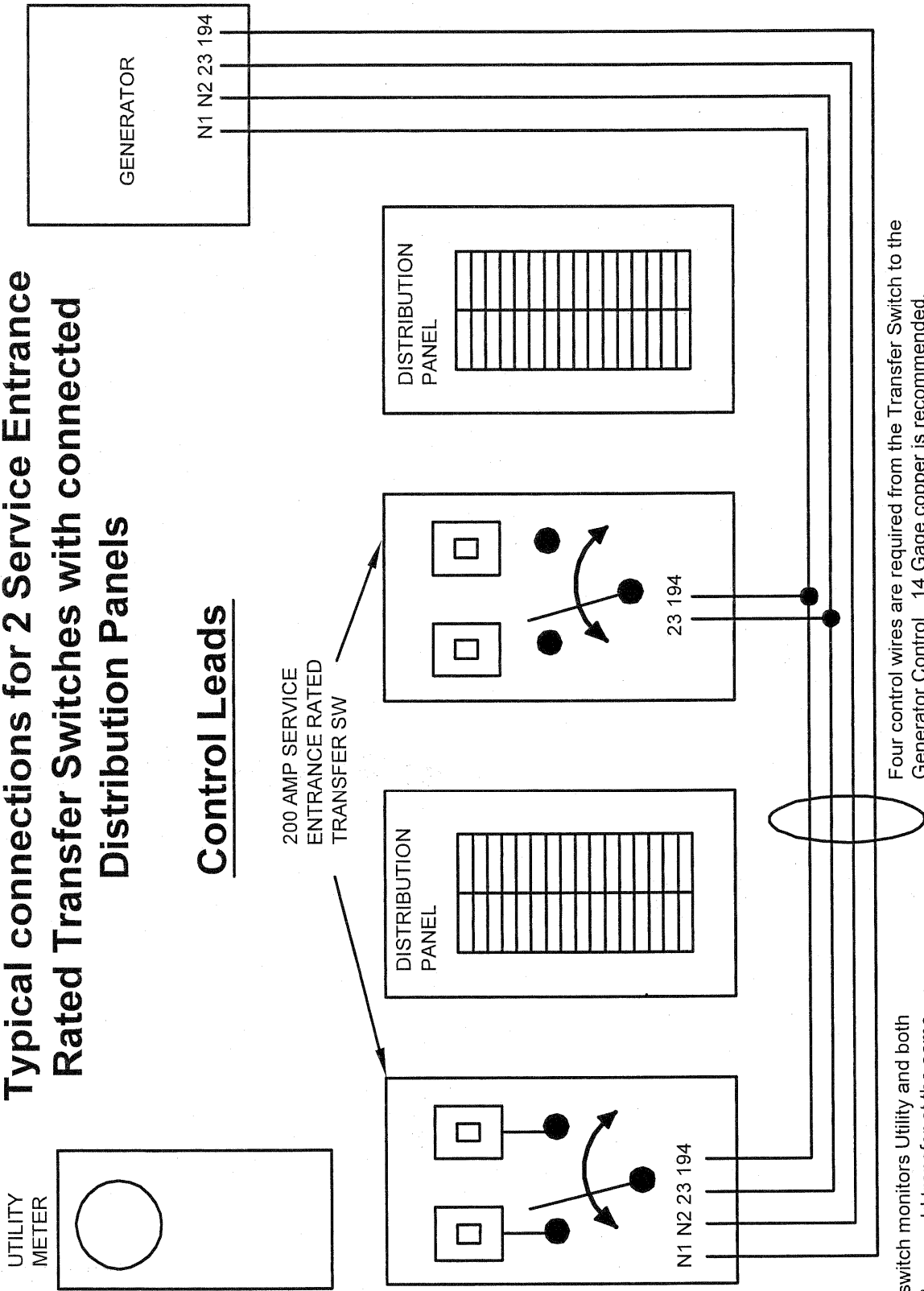


## POWER LEADS

Sec 240.21 & 230.71 2005 NEC

**GENERAC**  
POWER SYSTEMS, INC.

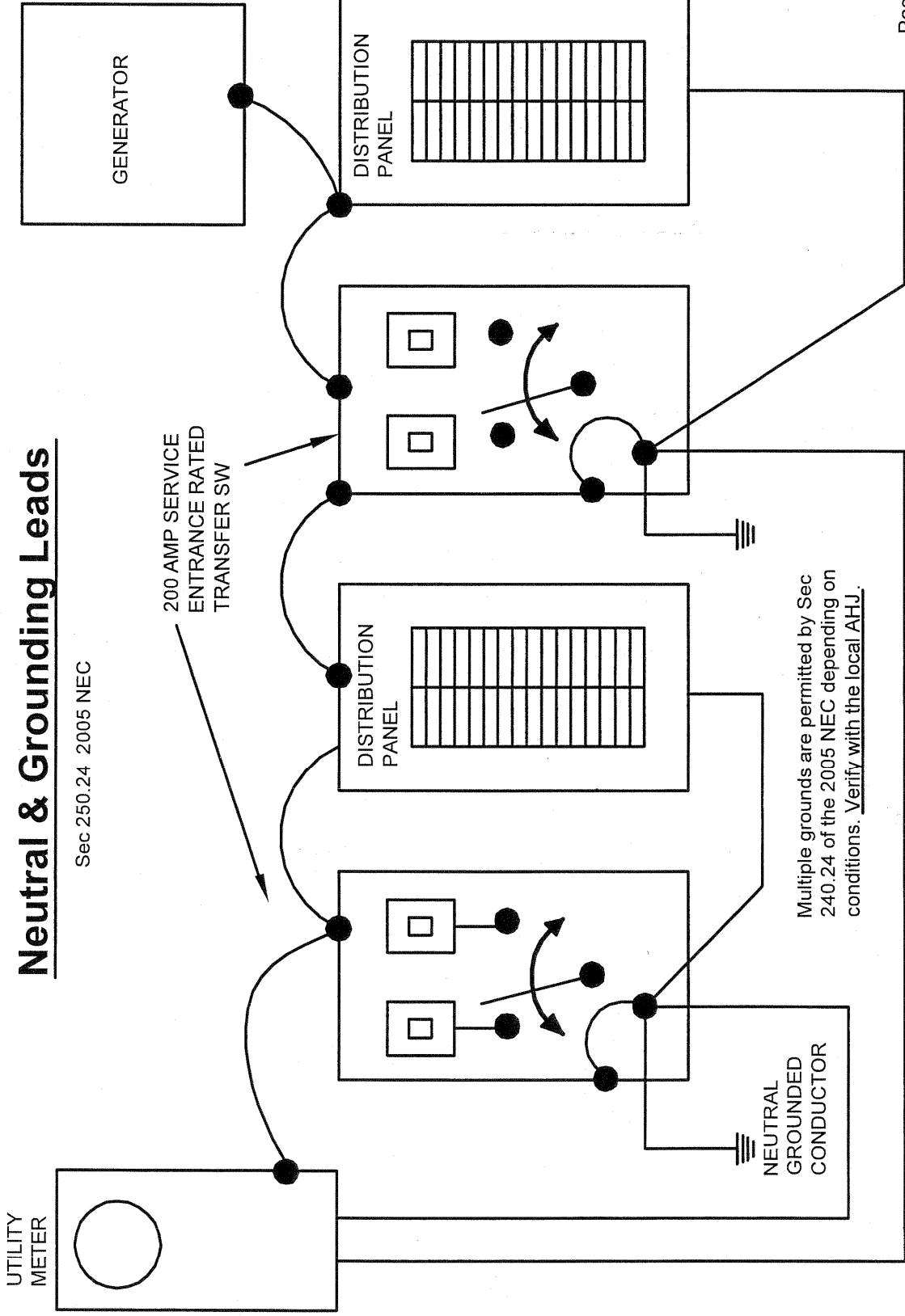
# Typical connections for 2 Service Entrance Rated Transfer Switches with connected Distribution Panels



Four control wires are required from the Transfer Switch to the Generator Control. 14 Gauge copper is recommended. A separate conduit is recommended for the control conductors. A maximum of two RTS transfer switches can be operated from a single R100 Generator Control.

This switch monitors Utility and both switches would transfer at the same time. N1 and N2 are the Utility sensing leads. 23 & 194 are 12 volt control leads to transfer the switch to Emergency.

# Typical connections for 2 Service Entrance Rated Transfer Switches with connected Distribution Panels



## Neutral & Grounding Leads

Sec 250.24 2005 NEC

Multiple grounds are permitted by Sec 240.24 of the 2005 NEC depending on conditions. Verify with the local AHJ.