

# 0H0841

WEIGHT DATA			
ENCLOSURE MATERIAL	WEIGHT (GENSET ONLY) KG (LBS)	WEIGHT (WOODEN SHIPPING CRATE/SKID) KG (LBS)	SHIPPING WEIGHT (SKID AND GENSET) KG (LBS)
ALUMINUM	577 [12713]	44 [98]	621 [1369]

**NOTES:**

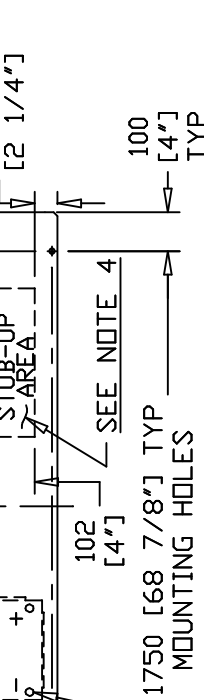
- 1) MINIMUM RECOMMENDED CONCRETE PAD SIZE: 1155 [45 1/2"] WIDE X 2255 [88 7/8"] LONG. REFERENCE INSTALLATION GUIDE SUPPLIED WITH UNIT FOR CONCRETE PAD GUIDELINES.
- 2) ALLOW SUFFICIENT ROOM ON ALL SIDES OF THE GENERATOR FOR MAINTENANCE AND SERVICING. THIS UNIT MUST BE INSTALLED IN ACCORDANCE WITH CURRENT APPLICABLE NFPA 37 AND NFPA 70 STANDARDS AS WELL AS ANY OTHER FEDERAL, STATE AND LOCAL CODES FOR MINIMUM DISTANCES FROM OTHER STRUCTURES.
- 3) CIRCUIT BREAKER INFORMATION:  
SEE SPECIFICATION SHEET WITHIN OWNERS MANUAL
- 4) INSIDE STUB-UP AREA FOR AC LOAD LEAD CONDUIT CONNECTION, NEUTRAL CONNECTION, BATTERY CHARGER 120 VOLT AC (< 5 AMP MAX.) CONNECTION, AND ACCESS TO TRANSFER SWITCH CONTROL WIRES. REMOVE FRONT COVER FOR ACCESS.
- 4A) FIELD CUT HOLE IS ONLY REQUIRED FOR MOUNTING OF GENERATOR ON AN EXISTING PAD.
- 5) REFERENCE OWNERS MANUAL FOR LIFTING WARNINGS.
- 6) REMOVE EITHER LEFT OR RIGHT HAND SIDE PANEL TO ACCESS EXHAUST MUFFLER AND FAN BELT.

REMOVE COVER FOR ACCESS TO RADIATOR FILL CAP

13.5 [17/32"] DIA. MOUNTING HOLE (4) PLACES LOCATED ON BOTTOM OF GENERATOR MOUNTING FRAME

822 [32 3/8"] TYP MOUNTING HOLES

755.6 [29 3/4"] CENTER OF GRAVITY



BATTERY 12 VOLT 26F 525 COLD CRANKING AMPS

**TOP VIEW**

1950 [76 3/4"]

1139 [44 13/16"] DOOR TYP

850 [33 1/2"]

WISE ACTION LATCH, ONE PER DOOR, ONE LIFT-OFF DOOR PER SIDE OF GENERATOR

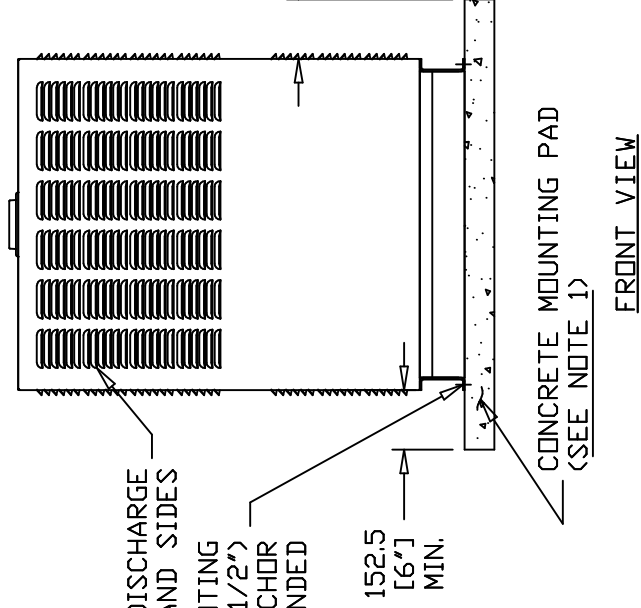
CONTROL PANEL R200 TYPE BATTERY CHARGER IS ENCLOSED WITHIN

EXHAUST MUFFLER ENCLOSED WITHIN, SEE NOTE 6

152.5 [6"] MIN.

152.5 [6"] MIN.

56 [2 1/4"]



EXHAUST AND AIR DISCHARGE LOUVERS - FRONT AND SIDES 13.5 [17/32"] DIA. MOUNTING HOLE (4) PLACES, 12.7 (1/2") DIA. MASONRY ANCHOR BOLTS RECOMMENDED

152.5 [6"] MIN.

**FRONT VIEW**

FUEL LINE CONNECTION 3/4" NPT FEMALE COUPLING LOCATED ON THIS SIDE (LH)

**LEFT SIDE VIEW**

1145.5 [45 1/8"]

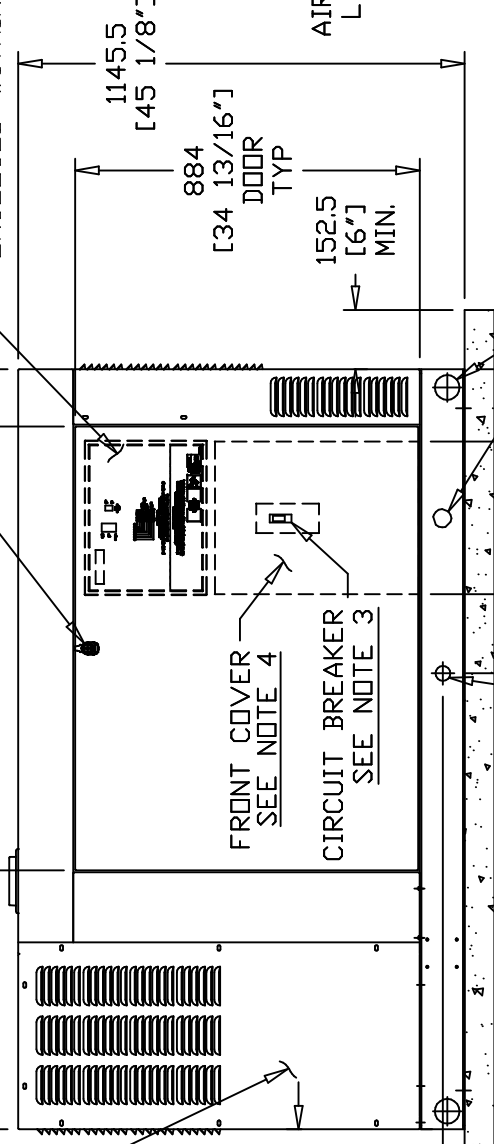
884 [34 13/16"] DOOR TYP

152.5 [6"] MIN.

EXHAUST MUFFLER ENCLOSED WITHIN, SEE NOTE 6

152.5 [6"] MIN.

152.5 [6"] MIN.



LIFTING PROVISION (4) PLACES, SEE NOTE 5 AND CENTER OF GRAVITY DIMENSIONS

FIELD CUT HOLE FOR OUTSIDE CONDUIT CONNECTION ONLY, SEE NOTE 4A

GENERAC POWER SYSTEMS OWNS THE COPYRIGHT OF THIS DRAWING WHICH IS SUPPLIED IN CONFIDENCE AND MUST NOT BE USED FOR ANY PURPOSE OTHER THAN FOR WHICH IT IS SUPPLIED WITHOUT THE EXPRESS WRITTEN CONSENT OF GENERAC POWER SYSTEMS.

© GENERAC POWER SYSTEMS 2001

QT 36

2.4L 36KW G2

ENCLOSURE - C2

INSTALLATION DRAWING

ISSUE DATE 10/6/08

SERVICE ITEM ACCESSIBILITY CHART

SERVICE ITEM	2. 4L
OIL FILL CAP	EITHER DOOR
OIL DIP STICK	THRU RIGHT DOOR
OIL FILTER	THRU RIGHT DOOR
OIL DRAIN HOSE	THRU RIGHT DOOR
RADIATOR DRAIN HOSE	THRU LEFT DOOR
AIR CLEANER ELEMENT	THRU RIGHT DOOR
SPARK PLUGS	THRU LEFT DOOR
MUFFLER	SEE NOTE 6
FAN BELT	SEE NOTE 6
BATTERY	THRU LEFT DOOR

REFERENCE OWNERS MANUAL FOR PERIODIC REPLACEMENT PART LISTINGS

**GENERAC POWER SYSTEMS**  
**Waukesha**  
 P.O. BOX 8  
 WAUKESHA, WIS. 53187

FILE NAME	0H0841-A.DWG	SIZE	B
SCALE	1 = 20	FIRST USE	QT SERIES
DWG NO.	0H0841	REV	A