

To convert from 120V to 240V:

1. Work on a unit that has cooled completely. Lift up the roof on the unit and remove the door. Put the engine start switch in the "OFF" position. (Figure 1)
2. Remove the 7.5A main fuse from the fuse holder.
3. Remove the battery per Owner's Manual instructions.
4. Remove the Control Panel Cover.
5. Take off Terminal Block Cover on engine divider panel by removing upper and lower screws. (Figure 2)
6. Loosen and remove two terminal nuts.
7. Remove the #33 wire and tighten the nut back on the #11 wire and **HOT** wire that goes to the Single Pole 50 Amp Circuit Breaker. (Figure 3)
8. Remove the #22 wire from the other terminal.
9. Locate the #22S wire (**18AWG**) coming from the stator. Cut the wire about 4" inches away from the housing. Crimp an insulated cap from the kit onto the wire still attached to the stator. Strip 1/4" inch of the insulation off of the other end of the #22S wire that was cut. (Figure 3)
10. Using the **HOT (18AWG)** wire supplied with the Conversion Kit, crimp the butt splice on the #22S wire that was stripped in the previous step.
11. Place the ring lug end of the Conversion Kit **HOT** wire from Step 10 and the lug end of the **HOT (10AWG)** wire from the Conversion Kit onto the same terminal as the #44 wire and tighten nut.
12. Place the #22, #33 and **NEUTRAL** wire from the Neutral Bus Bar onto the center terminal post and tighten the nut. (Figure 2)
13. Verify **ALL** wires are fed back through the safety horseshoe grommets and install the Terminal Block Cover.
14. Remove Side Access Compartment from enclosure.
15. Take off Single Pole 50 AMP Circuit Breaker and remove existing **HOT** wire.
16. Following the molded grooves, break out panel with pliers for clearance to fit the Double Pole 25 AMP Circuit Breaker from the Conversion Kit.
17. Attach two **HOT (10AWG)** wires from Terminal Block and tighten securely.
18. Install new Circuit Breaker onto the Side Access Compartment with existing hardware.
19. Install side Access Panel into enclosure with existing clips.
20. Install the Control Panel Cover.
21. Install the battery per Owner's Manual instructions.
22. Install the 7.5 Amp fuse back into the Controller.
23. From the MAIN menu on the Controller, Press ESCAPE, ARROW UP, ARROW UP, ARROW DOWN, ARROW DOWN, ESCAPE, ESCAPE. From this menu, ARROW DOWN to EDIT and press ENTER. ARROW DOWN to view options until select voltage is found. (**Do NOT use Calibrate Voltage**). Press ENTER and use the Arrow DOWN key to toggle to 240V. Press ESCAPE key to return back to the MAIN menu.
23. Install the door and close the roof.

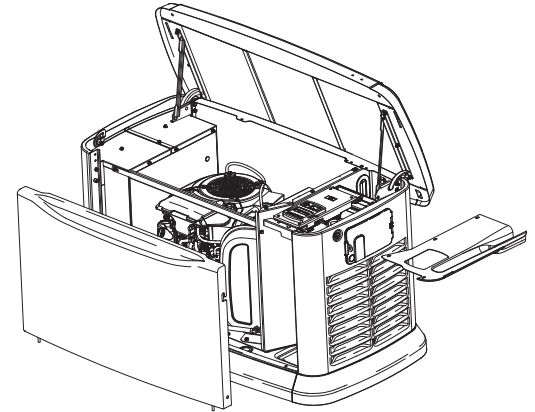


Figure 1

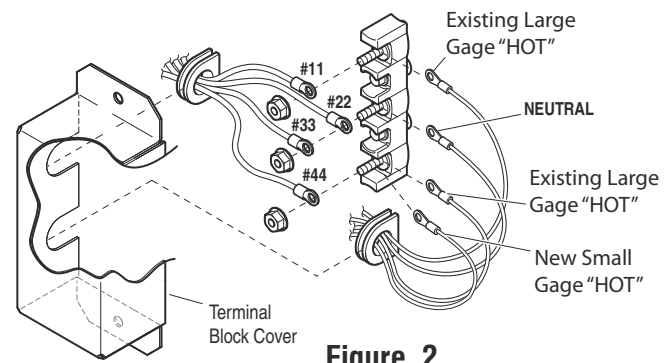


Figure 2

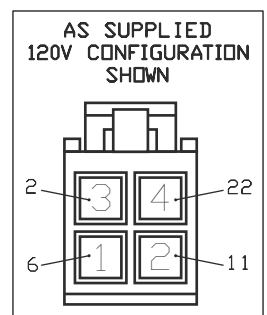
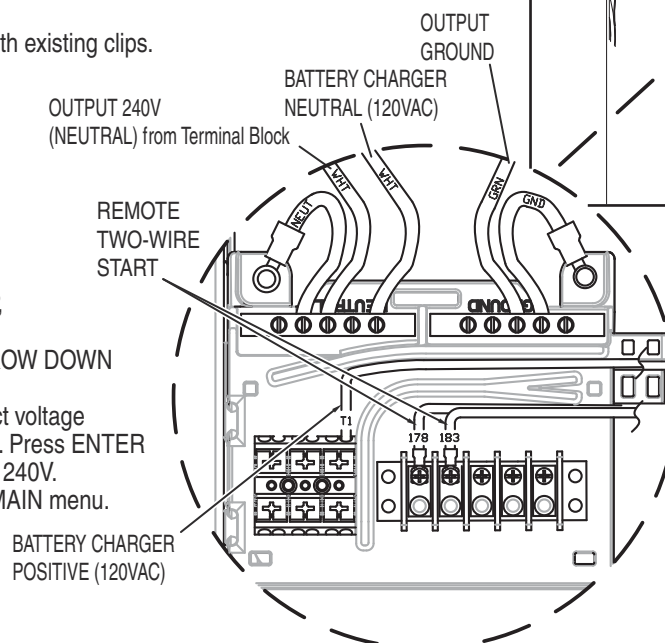
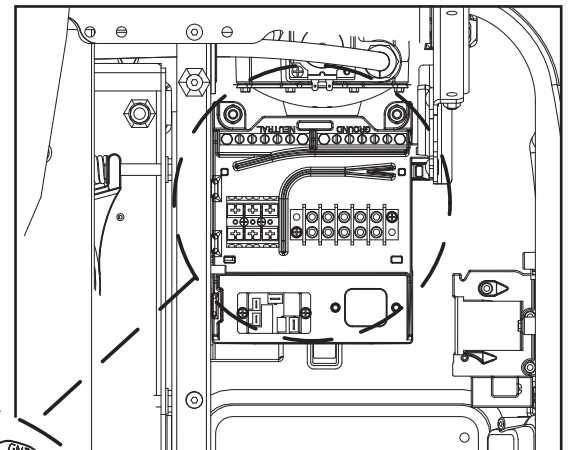
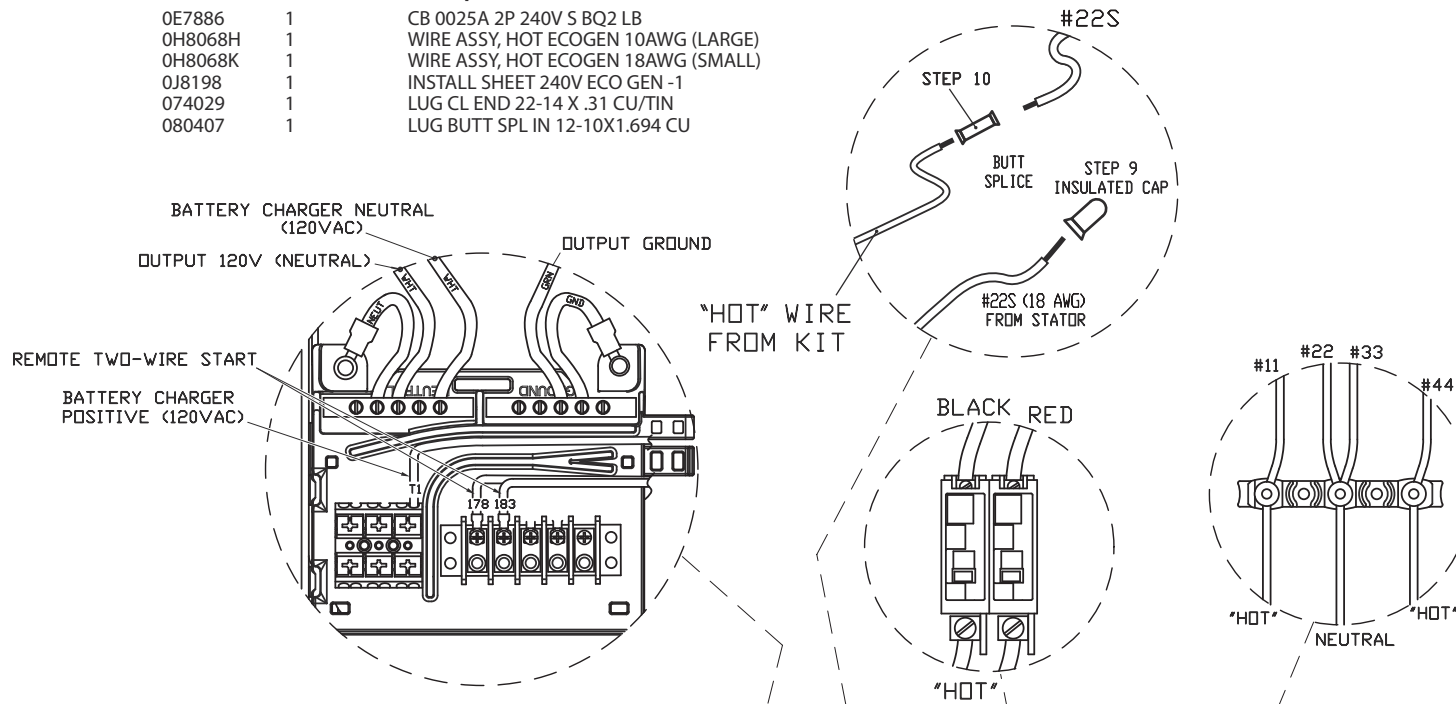


Figure 3

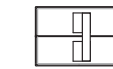
Kit Parts List

P/N	QTY	Description
0E7886	1	CB 0025A 2P 240V S BQ2 LB
0H8068H	1	WIRE ASSY, HOT ECOGEN 10AWG (LARGE)
0H8068K	1	WIRE ASSY, HOT ECOGEN 18AWG (SMALL)
0J8198	1	INSTALL SHEET 240V ECO GEN -1
074029	1	LUG CL END 22-14 X .31 CU/TIN
080407	1	LUG BUTT SPL IN 12-10X1.694 CU



BELOW ILLUSTRATION TO BE REFERENCED IN PLACE OF 0J1014 (LOCATED INSIDE COVER)

UNIT WIRING CONNECTIONS

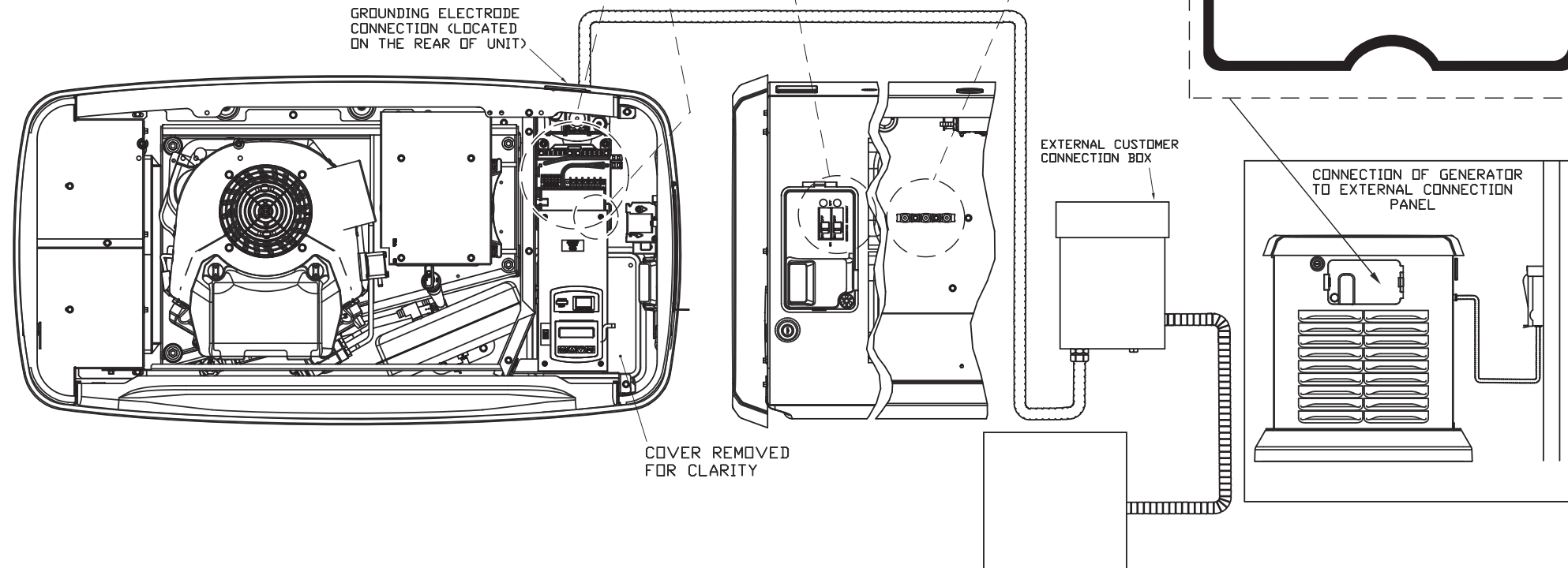


GENERATOR DISCONNECT

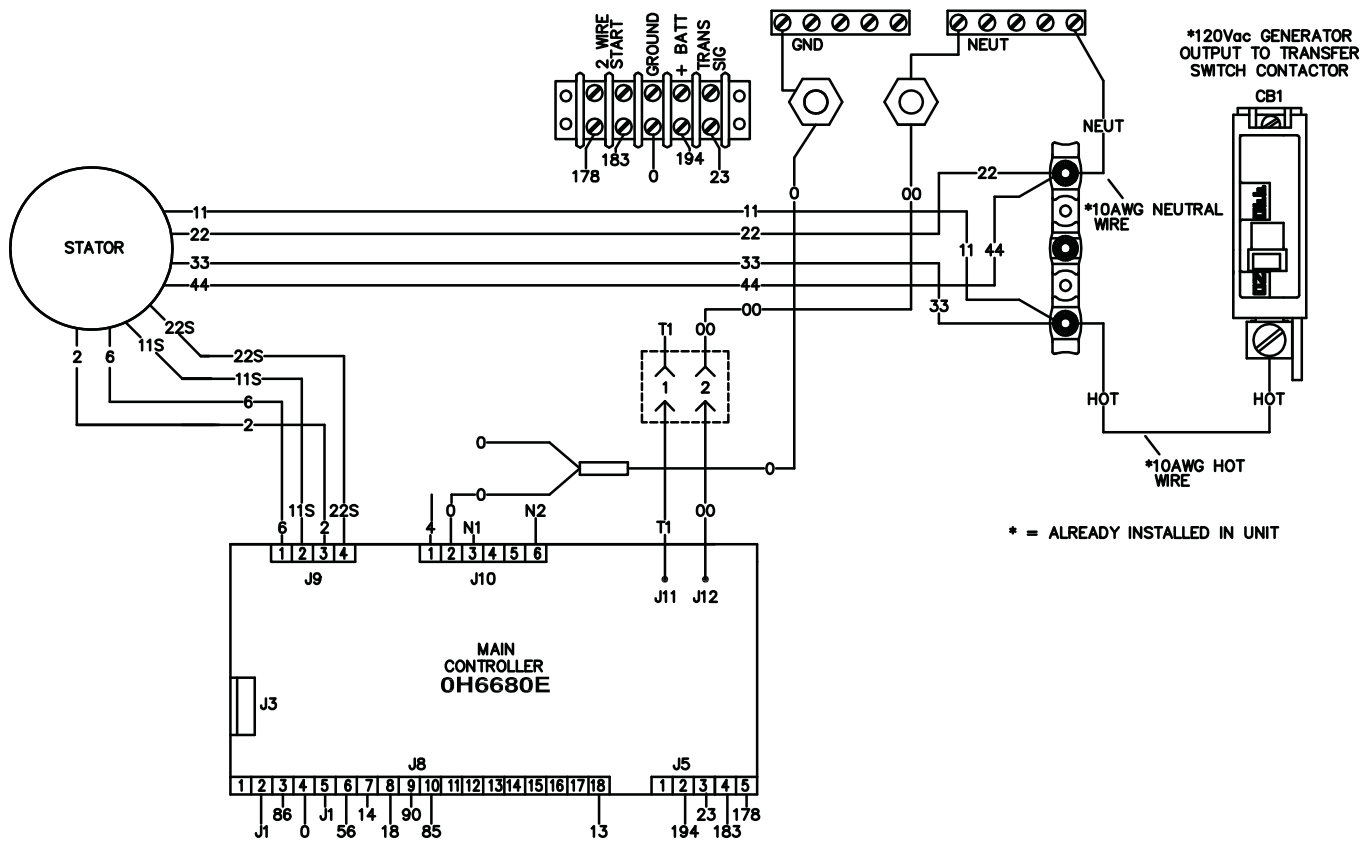
NEUTRAL CONNECTION INSIDE CONTROL PANEL

USE COPPER CONDUCTORS RATED 75 °C

AMPERAGE RATING	WIRE SIZE RANGE	TIGHTENING TORQUE
25A	#8 AWG Cu	25 IN-LB



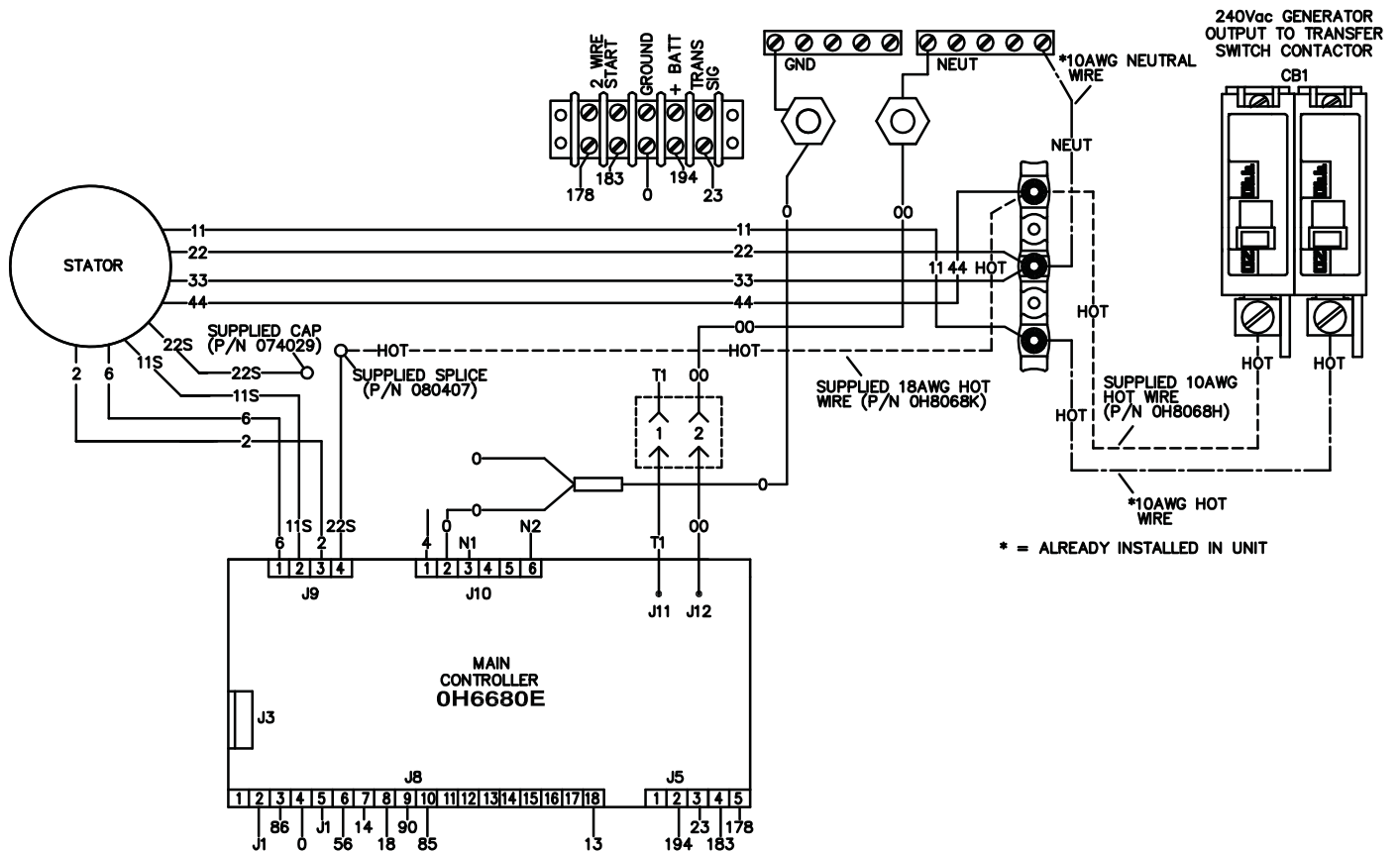
05818-1



* = ALREADY INSTALLED IN UNIT

120Vac AS SUPPLIED

240Vac CONVERSION



* = ALREADY INSTALLED IN UNIT